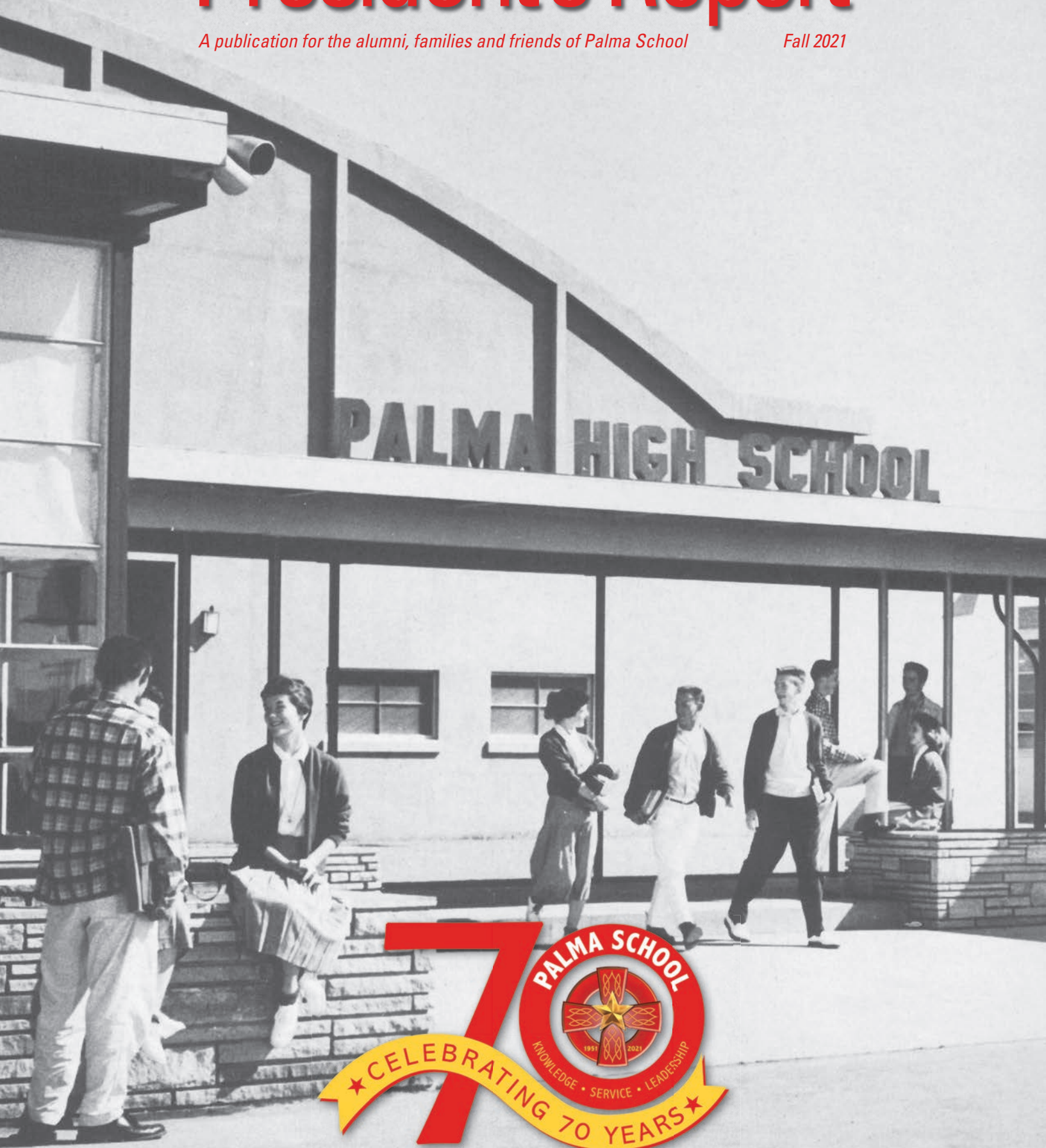


President's Report

A publication for the alumni, families and friends of Palma School

Fall 2021



And this is just the beginning



Over the past 70 years, Palma School has grown into a powerhouse for high-quality education, set the standard for athletic achievement and forged men of unmatched character.

Growth like this doesn't happen by chance.

Palma is built on a strong foundation of support from the community. Your passion for fostering the Palma story is how we stay true to our mission and why we envision an exciting tomorrow. There's a lot more growing to be done.

Together we will build an even stronger Palma.

The Palma Fund

Make your gift to the Palma Fund

Online giving is convenient and secure. Or visit palmaschool.com/online-giving



Palma School is accepting applications for the 2022-2023 academic year. If you know a student who would benefit from, and make a positive contribution to, the Palma tradition of graduates who possess character and conviction, please contact the Admission Office at 831.422.6391 or email admission@palmaschool.org.

Sponsor Council

Br. Lawrence T. Murphy, C.F.C.

Mr. Trey Busch

Mr. Don Chapin

Board of Directors

Mr. Robert Alberts

Mr. Lou Amaral '02

Ms. Michelle Beach

Dr. Rolando Cabrera '83

Mr. Dennis Donohue '72

Mr. Eric Mueller '01, *Chair*

Br. Dominic Murray, C.F.C.

Mr. Philip Speciale

Ms. Kelly Sutherland

Mr. Ted Taylor '04

Mr. Calvin Van Ruler

Mr. Joseph Walsh '85

Mr. Michael Zanger '82

Be powerful. Be a Chieftain.

The *President's Report* is produced by Palma School's Office of Marketing and Communications.

Roger Rybkowski, *Director*

Writing & Editing: Roger W. Rybkowski, Tracy Jones

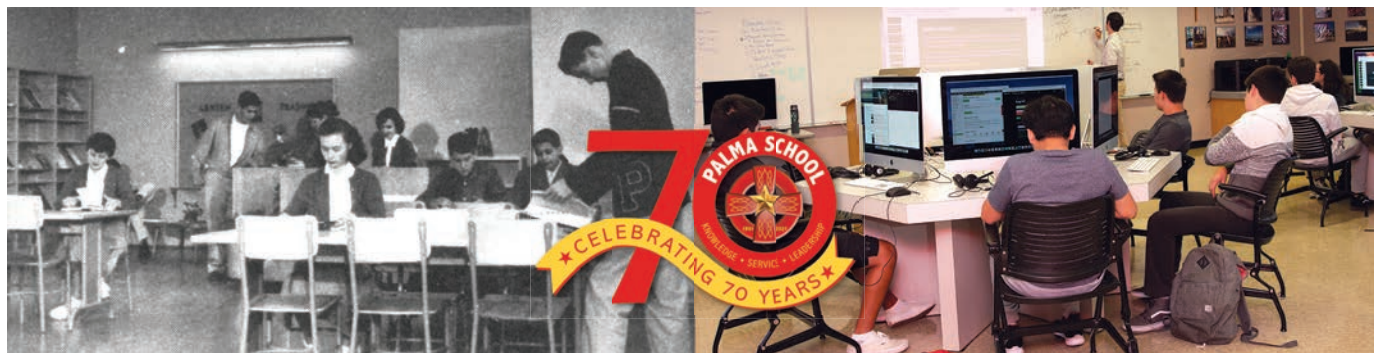
Photography: Jennifer Pagliaro, George Garibay, Palma Students

Palma School is a 501c(3) tax exempt organization for both federal and state tax purposes.

Copyright © 2021 All rights reserved.

Contents

Mission Statement / Essential Elements	2
President's Message	3
In the Beginning	4
College Bound	8
Top Ten Men of 2021	9
Academic Awards	10
2021 Distinguished Scholars	11
Our Next 70 Years	12
Annual Report	14
Rising to the Challenge	15
President's Circle	16
The Palma Fund	17



OUR MISSION

Palma is dedicated to providing an excellent college-preparatory education in a Roman Catholic environment that embraces *The Essential Elements of an Edmund Rice Christian Brother Education* and challenges each individual to develop spiritually, intellectually, morally, physically, and socially.

Essential Elements of an Edmund Rice Christian Brother Education

- I Evangelize youth within the mission of the church.
- II Proclaim and witness to Catholic identity.
- III Stand in solidarity with those marginalized by poverty and injustice.
- IV Foster and invigorate a community of faith.
- V Celebrate the value and dignity of each person and nurture the development of the whole person.
- VI Collaborate and share responsibility for the mission.
- VII Pursue excellence in all endeavors.

President's Message

Milestones in life are always an incredible time for self-reflection, a time to look back on things we have accomplished and to look forward to things to come. With the opening of Palma 70 years ago this year, I am sure the founders and the graduates of those early years had no idea what their school would be like decades later. Opening as a co-ed school in 1951, Palma served the first 13 years of its existence offering an exceptional Catholic school education to boys and girls grades 7-12. This little school that opened to just a few dozen students in 1951 has blossomed to hundreds of young men, grades 6-12 — a top-notch college-preparatory school that regularly sends its students off to top universities and provides incredible leadership in our valley and beyond when these young men return to work in our community. These same young men volunteer thousands of hours of their time, compete in academic and art competitions, and proudly wear the red and gold in their sports endeavors, making Palma the predominant sports program along the Central Coast. This success is not lost on our students as they know they are enriching and building on a program that was started three generations ago on a small patch of dirt on the edge of town known as 919 Iverson. I am proud of what the students and the school have accomplished over the past 70 years and look forward to seeing their achievements in the decades ahead.

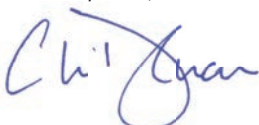
The parking lot is back to full capacity and the laughter and voices are back on campus. It has been a difficult 19 months for all of us, but it is great to see and hear the energy of our campus back to as normal as life can be. Social gatherings by both parents and students, lunchtime games on the field, and athletic contests being played throughout the county are back to the norm, and by the look on the faces of our families and boys, it is a great thing.

Our students walked back on campus with the addition of a new athletic field and track surface, as well as a new scoreboard for our athletic facilities. Our boys compete with all of their hearts and deserve a first-class track and field to do that on. None of this would have been possible without the help of dozens of alumni and families who donated to make this project a reality. I will forever be indebted to them for their generosity during this more than unusual time we are living in. We are currently finalizing the plans for a new fitness center and baseball complex in the coming years that will replace the current weight room/batting cage area. I will showcase these plans to our families as they become complete.

While change and flexibility seem to be the norm nowadays, what remains the same is the strength and mission of Palma School: providing a first-rate, Catholic school education to all of the young students along our Central Coast. This will never change.

I wish good health to you and your family in the coming months, and I hope to see you on campus soon as we celebrate 70 years of this incredible schools' existence.

Go Chieftains,



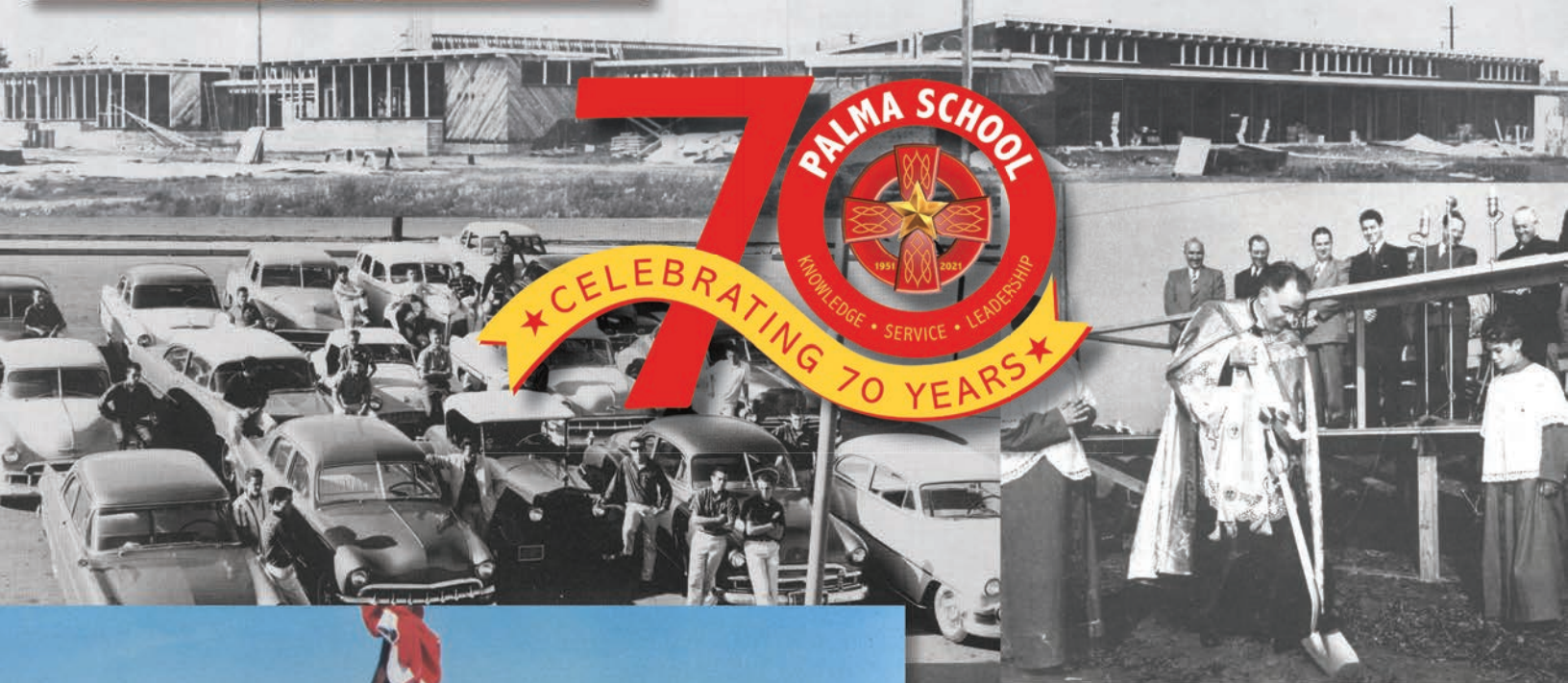
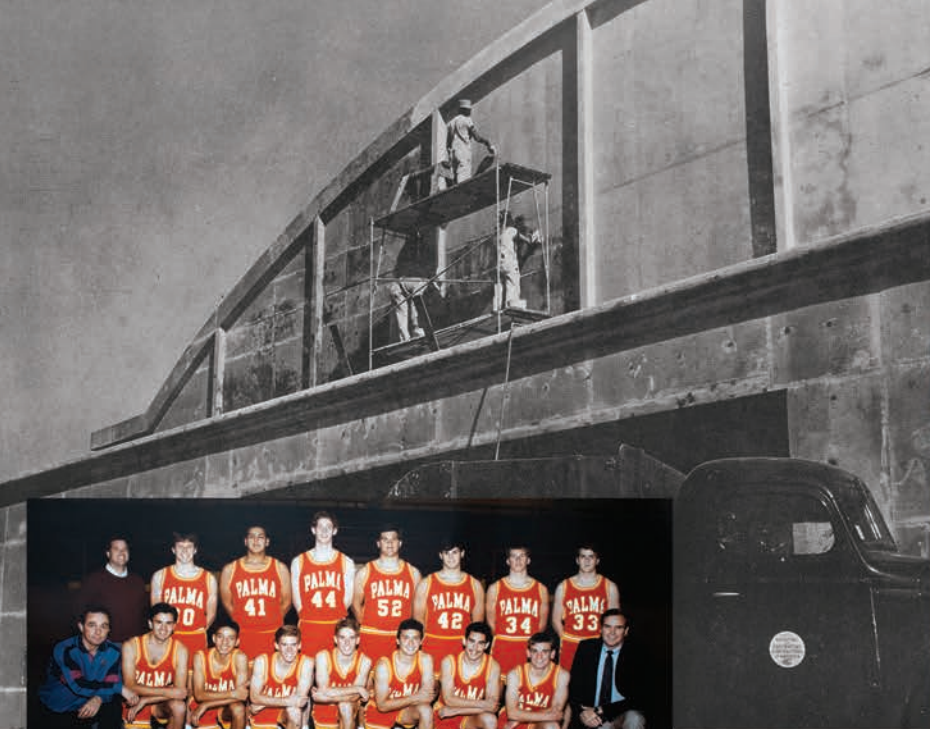
Chris Dalman '88

President



Chris Dalman '88

While change and flexibility seem to be the norm nowadays, what remains the same is the strength and mission of Palma School: providing a first-rate, Catholic school education to all of the young students along our Central Coast. This will never change.



In the Beginning

In 2018, Br. Charles Avendano, C.F.C., one of the first three Christian Brothers to start Palma, sat for an interview. Here is how he recalls the early years.

Left to right: Br. Avendano, Br. McManus and Br. Luberts on the porch of their house on Maple Street.



In 1951 I got a call from my superior who said, “pack your bags because you are going to Salinas, California.” I checked the encyclopedias and reference books and all I could find was “Lettuce Capital of the World.” We didn’t even have a school there. Then I found out there were two other Brothers also going to this place called Salinas. We were opening a new school.

When I arrived, Br. McManus and Br. Luberts were on the tarmac waiting for me. The parish had bought a house on Maple Street and that became our first home. It was small, only three bedrooms, but we fixed it up with a chapel, a parlor, three bedrooms, a dining room, living room, pantry and a kitchen. For the three of us, we didn’t mind it.

Br. McManus had been here a week or two before I arrived and he had already done the registration. The school was just two wings (now B and C wings) and front offices. The boys were in one wing and the Sisters of Notre Dame were in the other with the girls. We started with grades seven, eight and nine. The Sisters started with grade nine because they didn’t want to take girls out of Sacred Heart School. Each year we added another grade and another Brother to teach it until we had six.

The first two years there were just two wings; one on each side. By the second year we needed two more wings. Money was tight so they were going to either build the two wings or put up a gym. In the end they decided to do both. I remember getting upset because they were putting up the walls to the gym and they were lifting these huge beams and guys were on the beams riding them across to get them into place and the kids were more interested in looking out at that than in what I was doing in the classroom. After we built the gym we decided we needed a cafeteria so we built the cafeteria where it is now.

It was kind of a strange situation because we (Christian Brothers) had control of the property and our side of the school, but the parish kept control of the girls’ side. I think they called it co-instructional. It was a new idea and many cities were building schools with this idea.

This whole area on the other side of Iverson really mushroomed after we got here. The lettuce fields came up to the end of our present baseball field; that was the end of Iverson. There was no Palma Drive, no Crespi Drive, none of these streets were here.

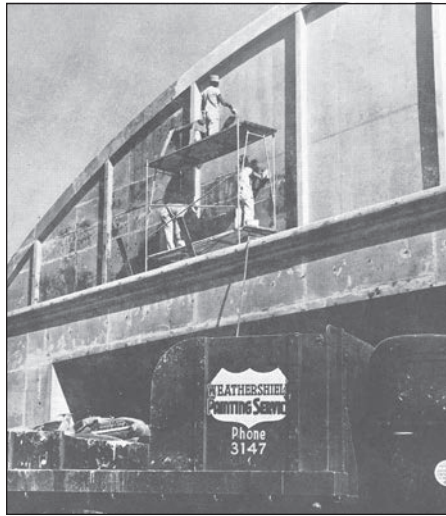
I can remember, the first year, there was a field of cabbage. I don’t know why they planted cabbages, but they did. And the next spring, the cabbages were rotting in the water — the stench! Eventually they put in Acacia Street, put Iverson through and then this whole area just mushroomed overnight. We used to walk from our house on Maple Street past the high school, up Gile Street,

continued on page 7

The People Who Built Palma School



Robert Lewis of Lewis Service and Supply of Salinas looks over the showers in the boys' locker room.



Weathershield Painting Services was contracted by J.T. Brown to take on the massive task of painting the new school.



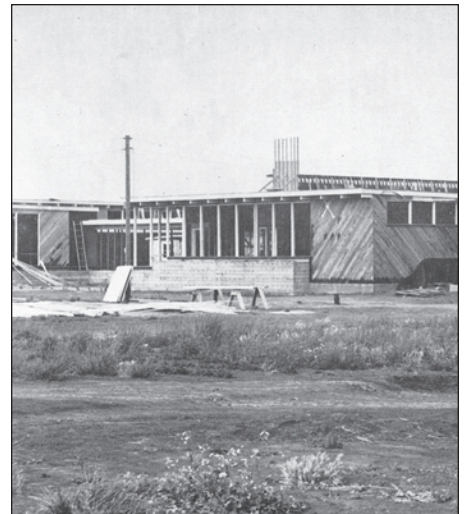
Workmen from Salinas Valley Floor Company, owned by Ray Pool, sanding the gym floor.



John A. Core, out of Santa Clara, was the plastering contractor for the exterior of Palma High School.



George Augusta General Engineering Contractor did the excavating and paving.



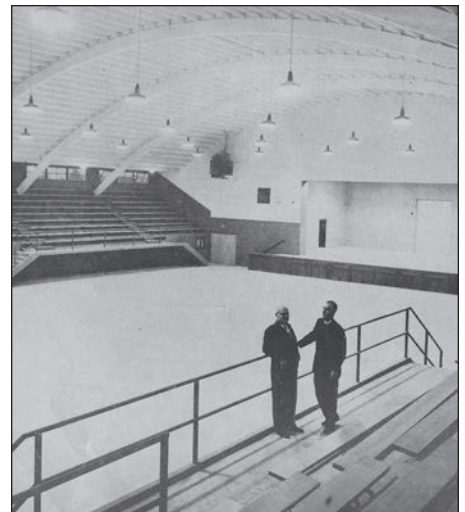
Joe Rogers of Square Deal Lumber Company in Salinas was responsible for all the "heavy timbers and sturdy lumber."



Robert M. Vera and Eugene P. Cava are partners of Vera's Sheet Metal Service.



Alisal Electric installed all of the electrical infrastructure.



The new "auditorium" is complete.

continued from page 5

then down Iverson...there was no other way of getting here. Then after two or three years, they began constructing roads and then houses went up like crazy.

While we didn't have large numbers when we started, the numbers grew very rapidly and the number of girls also grew and so, in the second or third year, Msgr. Earley got the idea that we needed a girls' high school and there was going to be enough boys to fill all four wings here so he decided he was going to build a new high school way out in the wilderness.

The parents were great. The dads would come up on Saturdays, Sundays and holidays and level the fields and lay pipes in because we had no fields and we needed a football field.

The city council wanted to put Romie Lane through from Main Street out to the edges of the city which would have cut right into the middle of the football field. So, Msgr. Earley fought until the city council dropped the idea. We had unobstructed property down to the present end of the property. Then, there was a big ditch and lettuce fields beyond.

The parents also organized all the busing of kids back and forth to games in their station wagons...they all had station wagons. Finally the pastor bought an old greyhound bus and I learned how to drive that. I drove the teams to Watsonville or to Monterey or Carmel, wherever we could get a game.

When the girls moved we (Christian Brothers) took over the whole property. The pastor just gave us the whole thing, lock, stock and barrel. I taught here for six years. I left here in 1957 and went to Los Angeles. ●



In 1954, six Christian Brothers were teaching at Palma. (back row l to r): Br. Avendano, Br. Smith and Br. Castle. (front row l to r): Br. Hurley, Br. Luberts and Br. Curtin.

For God and Country

Rt. Rev. Msgr. James G. Dowling
*Diocesan Superintendent of Schools
Monterey-Fresno Diocese 1951*

The admirable zeal and unbounded generosity of Priests, Brothers, Sisters and laity have made possible the new Palma High School of Salinas, California. Its worth is not measured in brick and mortar but in the truly Christian and genuinely Catholic philosophy of our whole Catholic educational system. Salinas' Palma High, like all of our schools, must at all times be a Temple of Truth and of Freedom. Love and sacrifice have made it possible and these qualities must fill the hearts and permeate the lives of every child of God who will go forth from its class-rooms and athletic grounds. In the past ten years we have witnessed the phenomenal growth of our Catholic school system in the Diocese of Monterey-Fresno. We have seen these schools double in number and triple in enrollment. In spite of increasing building and maintenance costs the demand grows louder and stronger for more and more Catholic schools. This we know is due to the growing conviction among Priests and people that religion in education is necessary and the character formation of any child is grossly deficient that neglects the inculcation of religious principles and training in the observance of God's laws. The vast majority of parents know this to be true. It is a truth that must be admitted by all who observe what is happening in the practical experience of everyday life. The people of Salinas know it and that is why they have worked so hard and contributed so generously that this Catholic High School might become a reality.

Zealous Priests realize that a Parish without a Catholic school is a dying Parish. It is less than half alive when it is without a Catholic High School.

The religious life of Salinas has been given added strength and renewed vigor with the building of his new high school. From it will come better Catholics and better citizens.

Our sincere congratulations to all who have made this excellent school a reality. May blessings in abundance come to teachers and pupils for many years of successful accomplishment for God and country. ●

College Bound

The students in the graduating class of 2021 are attending some of the finest universities in the country. We are proud to announce the colleges in which our graduates are enrolled.



Congratulations Class of 2021



Palma's Top Ten Men of 2021

Part of Palma's mission is to instill in its young men a passion for learning and provide a solid educational foundation on which to build. Each year we salute the seniors whose outstanding performance in the classroom exemplifies this mission. Congratulations to the following 10 seniors who had the highest grade point averages in their class and received noteworthy nods from universities across the nation. ●



Blake Iverson
Cal Poly San Luis Obispo



Nevin Manimaran
UC Santa Barbara



Anthony Scattini
UC Santa Barbara



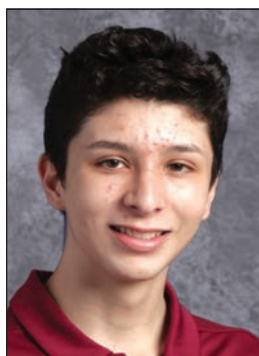
Anthony Santa Ana
UC Davis



Marshall Boutonnet



Evan Asuncion
Cal Poly San Luis Obispo



Andrew Zendejas
UC Berkeley



Jake Davidson
UCLA



Kevin Martinez
Loyola Marymount University



Owen Bengard
Cal Poly San Luis Obispo

High School Graduation Awards

Blake Iverson	Monsignor Thomas J. Earley Gold Medal for Scholastic Proficiency Valedictorian
Nevin Manimaran	Monsignor Thomas J. Earley Gold Medal for Scholastic Proficiency Salutatorian
Shane Olszanowski	Palma Gold Medal in Theology
Marshall Boutonnet	Palma Gold Medal in English
Anthony Santa Ana	Palma Gold Medal in Social Studies
Anthony Santa Ana	Palma Gold Medal in Mathematics
Andrew Zendejas	Palma Gold Medal in Foreign Language
Blake Iverson	Palma Gold Medal in Science
Blake Cornell	Palma Gold Medal in Fine Arts
Gabriel Jauregui	Palma Gold Medal in Music
Darius Amador	Palma Loyalty Award
Blake Iverson	Palma Leadership Award
Anthony Scattini	Principal's Leadership Award
Anthony Scattini	Monroe Award for Proficiency in Mathematics
Anthony Santa Ana	Br. Martin D. Cunningham Award for Excellence in English
Andrew Zendejas	Br. Charles J. Avendano Award for Excellence in Social Studies and Service
Evan Asuncion	Christopher Hitchcock Inspirational Science Award
Anthony Scattini	W.H. "Hank" Muller Outstanding Scholar Athlete Award
JT Amaral	Br. M.L. Crumlish Athlete of the Year Award

Junior High School Graduation Awards

Nicolas Pezzini	The Reverend Monsignor Thomas J. Earley Award for Religious Studies
Jeremy Regalado	Language Arts Award
Jeremy Regalado	Mathematics Award
Sebastian Mazariegos	Music Award
Lucas Milburn	Social Studies Award
Lukas Hell	Science Award
Enrique Vargas Saavedra	Foreign Language Award
Alistair Perkins	Fine Arts Award
Michael Padilla	The Gerald D. Flowers Golden Chieftain Scholarship Award for Service
Lucas Milburn	Br. Charles McManus Award for Scholarship, Leadership, Citizenship & Sportsmanship
Isaiah Rangel	The Palma Investors Club Scholarship
Jeremy Regalado	The Palma Investors Club Scholarship

2021 Distinguished Scholars

Congratulations to the members of Palma Class of 2021 who became Distinguished Scholars. They each received special recognition for their extraordinary effort after successfully completing a rigorous set of scholar requirements. ●



Evan Asuncion
STEM +
Excellence in the Humanities
Bilingual



Marshall Boutonnet
STEM +
Excellence in the Humanities



Jay Contreras
Bilingual



Jake Davidson
STEM+



Blake Iverson
STEM+
Excellence in the Humanities



Nevin Manimaran
STEM+



Anthony Scattini
Bilingual



Anthony Santa Ana
Excellence in the Humanities
Bilingual



Andrew Zendejas
Excellence in the Humanities
Bilingual



Our Next 70 Years

**“The work is well begun
and we rejoice at the
accomplishments we
have made to date.**

**There remains a
continuing effort
ahead to assure the
final success of Palma
High School. To that
end we are all united.”**

These words, written in the Palma High School dedication program in 1951 are as true today as they were then. For seven decades Palma has been a blessing for the people of the Salinas Valley and Central Coast and for just as long have a staff and faculty been united in Palma's success. We all have inherited the mantle of continuing the effort.

The Palma School of 2021 still has the iconic gym, surrounding classroom wings and cafeteria first envisioned by its founders. But, could they have foreseen today's students with activities like a robotics club, one-to-one technology or collaboration with “Brothers in Blue” at Soledad State Prison?

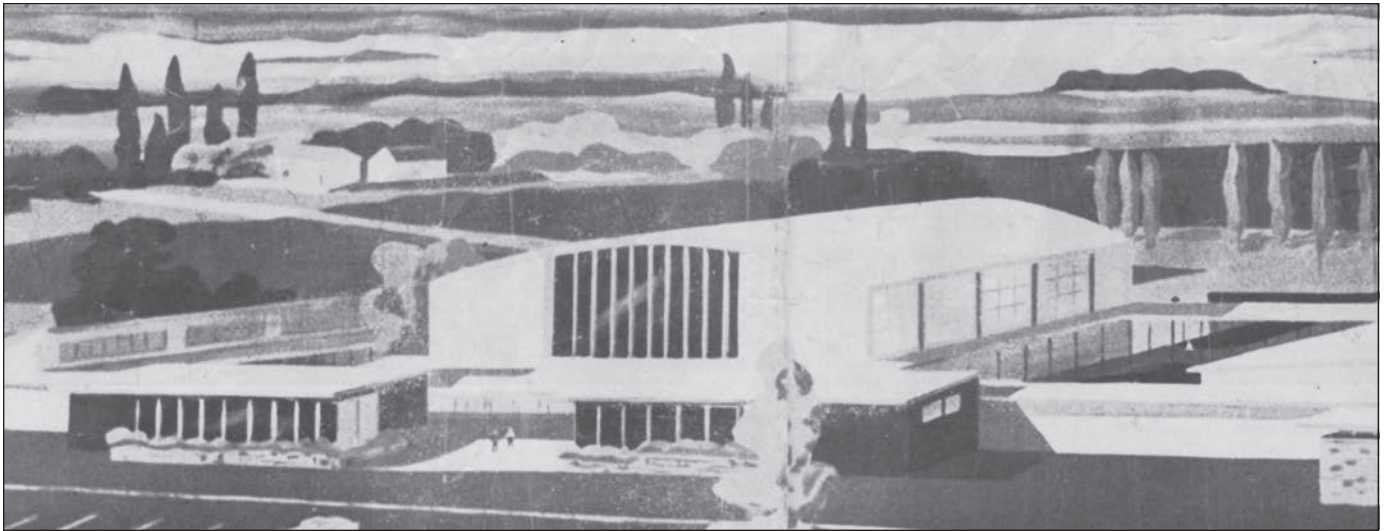
So, what does the next 70 years look like? Undoubtedly, nobody knows and few can predict what our community will look like, let alone what will involve Chieftains. But here is what can safely be predicted:

- ✓ Palma will continue to be driven by its mission to provide an excellent college-preparatory education in a Roman Catholic environment that embraces *The Essential Elements of an Edmund Rice Christian Brother Education* and challenges each individual to develop spiritually, intellectually, morally, physically, and socially.
- ✓ Palma will continue to make character-based education our priority.
- ✓ Palma will continue to provide the technology and facilities necessary for 21st Century learning.
- ✓ Palma will continue to cultivate the support of our alumni and local community.
- ✓ Palma will continue to seek the means to accomplish its goals.
- ✓ Palma will continue to graduate leaders whose influence will go far beyond our horizon.
- ✓ Palma will continue to be here for parents who seek a campus culture that empowers students.

Palma School was, is and will be a beacon of hope, a bastion of principled education and a valued resource that enriches the local landscape. Our mission is too vital to allow it to be eroded with time or diminished by popular culture.

“There remains a continuing effort ahead to assure the final success of Palma High School. To that end we are all united.” ●





Artist rendering of Palma High School in 1950



Rendering of the new athletic complex envisioned in Phase II of Champions Challenge (courtesy BFS Landscape Architects).



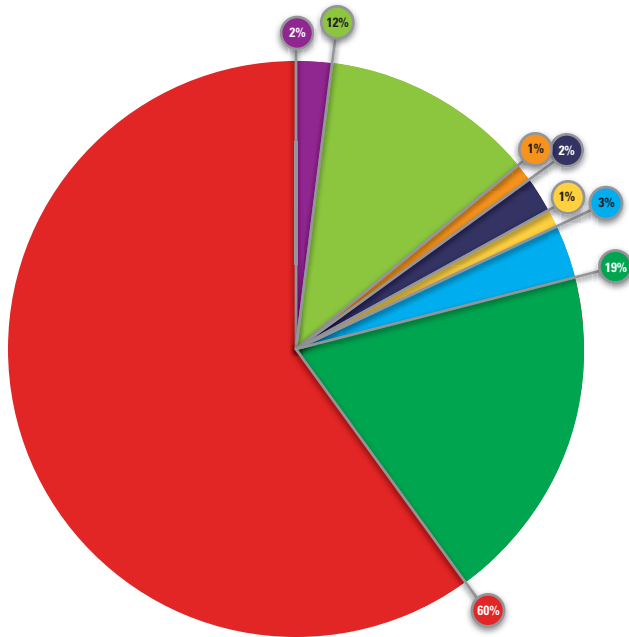
Rendering of new athletic fields (track and practice field are completed) (courtesy BFS Landscape Architects).



Rendering of the new athletic complex from the back (courtesy BFS Landscape Architects).

2020-2021 Annual Report

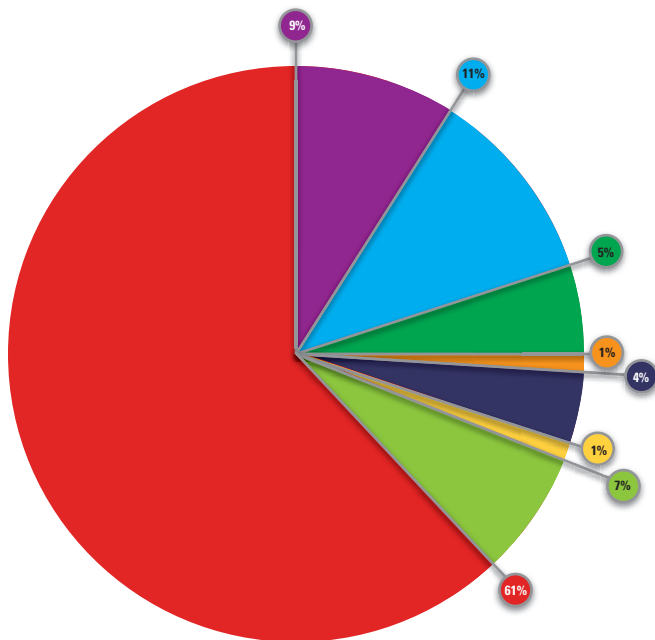
Palma School sincerely appreciates those who generously made annual, capital and endowment gifts between July 1, 2020 and June 30, 2021. To accomplish the school's goals, it takes the support of the entire community — alumni, board members, businesses, faculty, foundations, grandparents, parents, parents of alumni, staff and friends. These valued constituents ensure that our students continue to have the very best educational experience possible. Thank you, once again, for your generosity and support. The following numbers are unaudited.



Income

Tuition, Fees & Auxiliary Income	\$6,364,028	60%
Endowment Income	\$161,021	2%
Champions Challenge Capital Campaign	\$1,229,500	12%
Athletic Council	\$91,995	1%
Tuition Assistance & Scholarship	\$189,995	2%
Parents' Club & Sober Graduation	\$68,724	1%
Bingo (Net)	\$329,623	3%
Investment & Other Income	\$1,934,262	19%

Total \$10,369,148



Expenses

Educational/Institutional	\$5,182,570	61%
Plant & Maintenance	\$789,061	9%
Financial Aid & Scholarship	\$925,528	11%
Administrative	\$441,891	5%
Athletic Council	\$103,037	1%
IAAR Expenses	\$338,143	4%
Parents' Club & Sober Graduation	\$68,891	1%
Capital Expenditures	\$596,376	7%

Total \$8,445,497

Palma Fund Income: \$1,376,193.39

Donations to the Palma Fund are held by the Palma School Foundation which provides grants to Palma School on request.

Rising to the Challenge

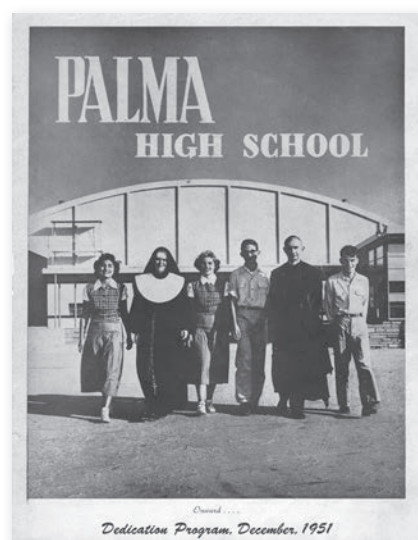
“This school is a big undertaking but there are few today who will deny that moral training is essential in education. There is no reward without sacrifice and sacrifices are being made for Palma High, and the reward will ultimately come. Our crop of boys and girls today — the men and women of tomorrow — will be stalwart citizens governed by right principle.”

Very Rev. Thomas J. Earley, V.F.

Rev. Patrick C. Deegan

Rev. Wm. A. Lane

from the dedication program, 1951



In 1942 a new school building was erected at Sacred Heart Parish. In 1945 the old school building was converted to Catholic Memorial High School for Girls. By 1948, it was evident a new high school was needed. Father Patrick O'Connor started raising money for the new high school on a new site.



Fr. Patrick O'Connor



Msgr. Thomas J. Earley



Lloyd Stolich



Joseph Piini

Donations came in from those with means, but it was not adequate to fund the project. Then, in 1950, under the leadership of new pastor, Msgr. Thomas J. Earley, parishioner Lloyd Stolich established the “1000 Club” which “reached almost every wage earner in the parish and many friends outside the parish.” It was hugely successful. Joseph Piini replaced Stolich a year later and the fund raising efforts were redoubled, raising enough money to begin the project. Palma School was born.

It's a lesson we will always treasure — *Palma School is people.*

You will find their names on the many plaques and tributes that dot the campus. There are rooms and buildings named in their honor. And, you will find hundreds more in this annual *President's Report*. They all are dedicated — not just to Catholic education — but to Palma School.

Over its 70 years Palma has faced a number of challenges. And, like its beginning, people in our community rose to meet each challenge. Inspired by our past and current supporters, we are obliged to do everything in our power to continue this unique opportunity — this unique school of “right principle” — long into the future. It is our turn to rise to the challenge.

To honor this renewed commitment, the President's Circle is being elevated. A new level of \$2,500 has been established this fiscal year. It is our hope that all who are currently in the President's Circle will choose to remain there and that a new wave of members will rise to the challenge. Members of the President's Circle are invited to a reception in their honor every year and are personally recognized by our President, Chris Dalman '88.

Since its inception, the success of Palma has been due to the strength of its supporters. It continues to be a passion for those who champion a quality education — an education made complete by its spiritual/moral foundation. Because of our community, Palma School is the preeminent junior high and high school in Central California. ●

2020-2021

The President's Circle

The President's Circle, established in 2008, gives special recognition to those Palma supporters who have made cumulative gifts of \$1,000* or more during the preceding fiscal year. Many families, alumni and friends choose to continue their membership in the President's Circle year after year in recognition of the superior achievements of the school. We salute the following members of this pace-setting group and hope that the power of their example will serve to encourage others to consider investing in Palma School.

A & G Machine Shop, Inc.
A & R Fresh INC
Jennifer & David Abdo
Mendy & John Amaral, Jr. '87
Andrew & Phyllis D'Arrigo Charitable Foundation
Mrs. Brenda Rose Angelo
Anonymous (4)
Ausonio Family Fund of the Community Foundation for Monterey County
Mrs. Nancy B. Ausonio
Bank of America Charitable Foundation
Peggy & Hilary Baumstarck
Michelle & Greg Beach
Bengard Ranch, Inc.
Blazer Wilkinson LP
Lucia & Michael Boggiatto
Martha (Bernasconi) '63 & Mark Botelho '63
Boutonnet Farms, Inc.
Valerie & Stan Braga
Rochelle & Les Breschini
Denise & Vincent Brigantino '82
Zuzzanne & Steve Broom
Julie & Thomas Bryan
Busch Family Foundation
Patty & Frank Busch
Mindy & Trey Busch
C.R.O.P. Foundation
Jan & Doug Cambier
Joine & Chip Campion '68
Walter G. Canipe Foundation, Inc.
Janice Caprara
Rebecca & Michael Castagnetto '94
Joanne & Kevin Castello
Christy Cava ND '85 & Ken Hill
Heidi & Jonathan Cava '89
Katy & Matt Cava '88
Barbara & Don Chapin
Don & Barbara Chapin Foundation
Jenny Pan & Bingkun Chen

Julia Christensen Charitable Remainder Trust
Desiree & Marcus Chung
Cislini Fund of the Community Foundation for Monterey County
Gina & Chris Cochetti
Charles Cochran '02
Community Foundation for Monterey County
Mr. James T. Conn
The Conners Family
Sally & Jim Conrad
Tianna Davidow
Kathleen & John Davis
Matilde & Dick DeLuna '56
Kathy & Richard Denier
Diocese of Monterey
Elaine Dotseth
Ed Dowd '63
Maureen & Brent Eastman '81
EBX Logistics Inc.
Patsy (Shellooe) '61 & Neil Fanoe, Jr. '60
Leslie & Tom Fanoe '64
Kay Filice
Susan & Robert Finocchio '69
Rose & Gary Francioni
Patricia & Alfred Friedrich
Mr. & Mrs. Ron Fuqua
Maria & Pete Garibay
Bea (Ortega) Gifford '60
Gold Star Buick GMC
Mr. Olegario Gomez
Amy & Matt Haas
Hanna-Brunetti
Hing Ng Charitable Trust
Alice & Mike Hitchcock
Kristin & Mike House '81
Huntington Farms
Roberta (Fanoe) '59 & Louis Huntington
Patricia & Stephen Jensen
Harry Bronson & Edith R. Knapp Foundation

Lorri & Tom Koster
Judy & Vic Lanini
Leavitt Central Coast Insurance Services
Amy & Mark Lema '87
Leslie & Fred Lombardi
Connie & Bob Lurie Foundation
Mary Catherine & Michael Malley
Margaret & John Marcroft
Alison & Kris Marshall
Mr. Patrick Martin
Joseph Massolo '65
Mary Ann & John McCarthy
The Harry E McDonald Family Trust
Nancy & George McInnis
Mary Alicia & Doug McRae
Marylu & David Mesa '73
Mission Ranches Fund of the Community Foundation for Monterey County
Pat & Wylie Mitchell
Debi & Jim Morisoli '71
Sarah & Eric Mueller '01
Kevin Mueller '06
Michael Mueller Family
Alex & Brian Neff '96
Kim & Lit Ng, Jr. '75
Angela & Gerry Nielsen '79
Nita & Tom Nino
NorCal Recognition Products
Margot & Tom Nunes '69
Mr. Thomas Nunes, Sr.
Nutrien Ag Solutions
Jerelee & Nathan Olivas
Mr. & Mrs. Mike Orradre
Palma Bridge Group
Palma School Parents' Club
Jean & Matt Panziera '74
Pebble Beach Company Foundation
Vickie & Andy Pomo '63
Debbie & Dan Porter
R.C. Farms LLC
Tanya & Erich Reinhardt

Ken Renney '65
Lillian Rianda & Family
Barbara & Clem Richardson, Jr. '67
Mrs. Val Roberti
Joy & Elio Rodoni
Annette & John Romans
John & Annette Romans Family Fund of the Community Foundation of Monterey County
Rotary Club of Watsonville
Sally Hughes Church Foundation
Joan (Botelho) '61 & Jim Scattini '60
Linda & Bennie Schulman
Mr. & Mrs. Brian Shanley
Elizabeth Fox-Short & John Short
Calvin M. Short Family
Suzan & Sam Slater
Claudia Smith
The Richard & Claudia Smith Family
Rosemarie & James Smith
Jennifer Murphy-Smith & Jason Smith '87
Renate & Richard Soares
Ingrid & Jerrett Stoffel '94
Edward Storm '61
Harry Sweigert
Linda & Bruce Taylor Family
Taylor Farms
Joanne Taylor
Valley Produce LLC
Tricia & Calvin Van Ruler
Emma & Steven Vetter
Steve Viarengo '87
Mr. & Mrs. Martin Vonnegut
Catherine Horan-Walker & Leonard Walker
Erin & Jack Watson
Cindy & John Winslow
Lisa York
Tim York
Brenda & Michael Zanger '82

**Please see the article on page 15*

The Palma Fund

The Palma Fund serves as the philanthropic foundation of giving and is a vital source of institutional momentum for the school. It supports every student, every teacher, every program, every day. Palma's annual giving campaign, The Palma Fund, ensures that all of today's students have the same unparalleled experience as the generations of students who came before them. Your support profoundly impacts the daily student experience, making outstanding opportunities possible in the classroom and beyond.

Leadership Clubs

Blessed Edmund Rice Club

(\$10,000 or more)

Mrs. Nancy Ausonio
Cislini Fund of the Community
Foundation for Monterey County
Ed Dowd '63
Susan & Robert Finocchio '69
Roberta (Fanoë) '59 &
Louis Huntington
Mr. & Mrs. Mike Orradre
Pebble Beach Company Foundation
Edward Storm '61
Linda & Bruce Taylor Family
Taylor Farms
Joanne Taylor
The Harry E McDonald Family Trust

President's Club

(\$5,000-\$9,999)

Anonymous
The Conners Family
Leslie & Tom Fanoë '64
Walter G. Canipe Foundation, Inc.
Brenda & Michael Zanger '82

Palma Merenti Club

(\$2,500-\$4,999)

Mrs. Brenda Rose Angelo
Jenny Pan & Bingkun Chen
Gina & Chris Cochetti
Elaine Dotseth
Huntington Farms
Judy & Vic Lanini
Sarah & Eric Mueller '01
Tanya & Erich Reinhardt

Founder's Club

(\$1,951-\$2,499)

Ausonio Family Fund of the
Community Foundation for
Monterey County
Bank of America Charitable
Foundation
Alison & Kris Marshall
Margot & Tom Nunes '69

Principal's Club

(\$1,500-\$1,950)

Peggy & Hilary Baumstarck
Zuzanne & Steve Broom
Patsy (Shellooe) '61 &
Neil Fanoë, Jr. '60
Kristin & Mike House '81
Mary Catherine & Michael Malley
Mary Ann & John McCarthy

Pat & Wylie Mitchell
Renate & Richard Soares
Erin & Jack Watson

Legacy Club

(\$1,000-\$1,499)

Jennifer & David Abdo
Anonymous
Valerie & Stan Braga
Rebecca & Michael Castagnetto '94
Barbara & Don Chapin
Rose & Gary Francioni
Mr. & Mrs. Ron Fuqua
Maria & Pete Garibay
Bea (Ortega) Gifford '60
Patricia & Stephen Jensen
Margaret & John Marcroft
Nancy & George McInnis
Marylu & David Mesa '73
Kevin Mueller '06
Hing Ng Charitable Trust
Kim & Lit Ng, Jr. '75
Nita & Tom Nino
Palma Bridge Group
Lillian Rianda & Family
Barbara & Clem Richardson, Jr. '67
Joy & Elio Rodoni
Joan (Botelho) '61 & Jim Scattini '60
Suzan & Sam Slater
Claudia Smith
Jennifer Murphy-Smith &
Jason Smith '87
Ingrid & Jerrett Stoffel '94
Emma & Steven Vetter





Willie Beesley '86 and CORE leaders welcome new freshmen on orientation day.

Chieftain Club

(\$500-\$999)

AmazonSmile Foundation
Anonymous (4)
William Archuletta '77
Renee & John Barnes
Michelle & Greg Beach
Lucia & Michael Boggiatto
Troy Boutonnet
Pamela & Corey Butler
Jan & Doug Cambier
Mark Caston '79
Susan Conley-Boutonnet
Drew Dalman '17
Kathleen & John Davis
Matilde & Dick DeLuna '56
Marral & Davy Dizon
Linda & Robert Dunlop '83
Kay Filice
Rose-Marie Browning &
Michael Fletcher '69
Kathy & Aaron Fuqua '94
Dr. & Mrs. Joseph Garvin
Patricia & Thomas German
Melanie & Tim Horwath
Carol Filice &
Dennis Johnson '73
Juniper Networks Foundation
Fund
Dr. William Kennedy
Patrice & Todd Kinion
Leslie & Fred Lombardi
John Mahoney '63
Mr. & Mrs. John V. Molinari

Karen & Chris Newcomb
Angela & Gerry Nielsen '79
Danielle & Robert Nino
NorCal Recognition Products
Julie & Michael O'Brien
Steven Otero '07
Stephanie & Matt Ottone
Jean & Matt Panziera '74
Mrs. Dolores Pia
Vickie & Andy Pomo '63
Marisol Contreras-Rico &
Raúl Rico '03
Mrs. Val Roberti
Judy & Tom Romans
Leanne & Jonathan Ryan '73
Michelle & Stefan Salameh '00
Salinas Valley Foot & Ankle
Inc.
Judy & William Salmina '58
Calvin M. Short Family
Rosemarie & James Smith
Michele & Phil Speciale
Matt Stevens '65
Mr. Earl Sutton
Bec & Drew Taylor '01
Amy & Ted Taylor '04
Rachel & T. Bruce Taylor '10
Steve Viarengo '87
Annie & Gene Zanger '80

Red & Gold Club

(\$250-\$499)

Mr. & Mrs. Robert Alberts
Mendy & John Amaral, Jr. '87

Anonymous (2)
Anonymous '93
Anonymous '02
Brian Antle '99
Karen Antle
Jeff Antle
Katrina & Peter Barone '98
Mr. Michael Bellinger
Charles Borg '58
Martha (Bernasconi) '63 &
Mark Botelho '63
Lynn & Robin Carmichael
Steve Chesterman '89
Carla & Dave Ciolino '76
Charles Cochran '02
Costco
Gina & Grant Cremers
Yanne & Chris Dalman '88
Andrew Davis '04
Anne & Jim Diggins '69
Paula & Dennis Donohue '72
Driscoll's
Shelby & Robert Eklund '80
Tony Filice '99
Maria & Allen Finley
John Gnosca '14
Pete Gnosca '75
Elizabeth & Harlan Grogin
Sandra & Clayton Hamilton
Scott Henningsen '97
Patti & Art Henry
Niaomi & Jeff Hrepich
Rae Anne &
Chris Huntington '82

Kristin & Peter Iverson
Hugo Jaime '01
Daniel Jaramillo '93
Gayla & Steve Jurevich '80
Jodie & Glenn Kaminskis
Kris & Gary Kaprielian
Mr. Peter Kasavan
Christopher King '01
Amanda & Michael Kong '04
Arita & Richard Magno '61
Dianne (de Lorimier) '59 &
Thomas Mouisset
Lucia & Christopher
Mychajluk '81
Henry Nunes '61
Maria & Robert O'Farrell
Jerelee & Nathan Olivas
Elizabeth & Chris Panetta
Kate & Greg Perkins
Printworks.Solutions
Coach Angelo Ross, Jr.
Cindy & Roger Rybkowski
Sara Scattini
Kate & Adam Secondo '94
Ginny & Justin Swan
Pam & Mark Thornton
Whitson Engineers
Dr. & Mrs. P.T. Wooler
Dominic Zanger '13
Nate Zanger '12
David Zwingman '64

Traditions Club

(up to \$249)

Janet (McKinsey) Agnew '64
Max Agpaoa '72
Patt & Michel Aiello '59
Aileen & Jose Ajoc Jr.
Joseph M. Aliotti '80
Sylvia Ramirez &
Carlos Alvarado
Bernadette &
Rodolfo Amador
Ashley & Luis Amaral '02
Mr. Leonard Anable
Margaret &
Dennis Andersen '57
Anne & Casey Angle '91
Jody & Joseph Annotti '75
Michael Annotti '88
Anonymous (9)
Maggie &
Gabriel Aparicio '86
Jayleen & Lloyd Appling
Jenny & Rene Arbizu '97
Ausonio Incorporated
Leticia & Gabriel Avila
Mr. & Mrs. Reginald
Barnes, Sr.
Rohena & M. Aslam Barra
Michael Bauernfeind '65
Willie Beesley '86
Dallis & Sonny Bennett
Eve & Mike Bergez
Shirley & Ernie Best '66
Holly & Rob Bishop
Judy & John Borchert '62
Vicki (Hallstone) '62 &
Phillip Broughton
Kelli & Jim Brown '84
Linda (Costa) Brown '56
Sandra Bruno & Sons
Jack Brusa '16
Susie & Stan Brusa
The Bucholtz Family
Ms. Teresa Bunnell
Joan & Robert Burlison '74
Jane Burton
Mr. & Mrs. Laurence Cain
Sylvia & Fred Capuyan
Jonathan P. Capuyan '18
Denise & Kevin Cardona '84
Stacy & Jeff Carnazzo '85
Ms. Karen Carrillo
Andrea & Arturo Castro
Carolina & Luis Castro
Teresa & Jon Christensen
Beth & Nicholas Cina
Mr. Kevin Clancy
Jessica & Don Clary
Laurie & Doug Classen '77
Lynn & Martin Colijn '72
Kay Collins
Lola Steinbaum-Cornell &
Trent Cornell
Erica & Scott Corner
Lenore &
Dennis Cosgrove, Sr.
Norm Costa Family
Stacie & David Cunha
Kelly & Hamil Cupero '81
Mr. Bill Dalman
Irene Dameron
Shelley & Sam Daoro '80
Sheri & John Davidson '88
Ken Deen '75
Dee & Michael Delapena
Aldo DeRose & Family
Sarah & John DeSantis
Mr. Fred Doherty
Ms. Geraldine Dorney

Br. Patrick D. Dunne, C.F.C.*
 Maureen & Brent Eastman '81
 Edmund Rice Christian
 Brothers North America
 Entre Nous Society, Inc.
 eScrip
 Joseph Flores '85
 Gerda & Raymond Foxworth
 Michelle & A.J. Galindo
 Mr. Gregory Gamble & Mrs.
 Shannon Dunne-Gamble
 Sandra & Josef Gamper
 Margaret & George Garibay
 Jane & Gary Gasperson
 Jeannette & Edward Geiger
 Kacey & Phil Giammanco '87
 Justine &
 Matt Gildersleeve '90
 Benito Gomez
 Linda (Losada) Gregory '63
 Valerie & Kellen Griffin '03
 Kristy & Roy Guerini '94
 Lisa Nino-Guerra &
 Jeff Guerra '92
 Ms. Ella Guidotti
 Paula & Jim Guidotti
 Doris & Wayne Gulate
 Rick Gutierrez '71
 Lisa & Tim Haag '72
 Kelly & Roland Halcon
 Eileen & Paul Hall '99
 Carly & Robert Hallatt
 Leigh Haller
 Maria Gemma &
 Charles Hayden
 Br. Patrick S. Hayes, C.F.C.
 Kate & Tim Hearne
 Gloria Castaneda-Henry &
 Thomas Henry
 Beverly (Stolich)
 Holthouse '59
 Leslie & Gary Holzhausen
 Jean Hontalas
 Mr. & Mrs. John Houseman
 HP Inc.
 Shannon & Thomas Hugo
 Cassie & Isaiah Jimenez '08
 Jeffrey V. Jimenez '98
 Tracy & Jeffrey Jones
 Nancy (Wilson) '62 &
 Rick Jones
 Yvonne & Chad Jury
 Christine & Art Kong
 Whitney & Ryan Kong '05
 Jeff Kowalski '98
 Mary & Robert Kutz '72

*Posthumously

Brenda & Bruce Lauritson '67
 Ms. Emily Lauritson
 Lynne &
 Michael Lauritson '73
 Ms. Rebecca Lauritson
 Mindy & Mark Leliaert
 Kelli & Abe Lincoln '88
 Mr. & Mrs. C.E. Little
 Mr. & Mrs. Edward Lomboy
 Karen & Patrick Lopes
 The Macias Family
 Garrett Maker '18
 Stephanie & Wyatt Maker
 Wyatt Maker '16
 Emma & Victor Marquez '71
 Mr. & Mrs. Robert Martin
 Margaret D'Arrigo-Martin &
 Stephen Martin
 Jessica & Tim Martinez '89
 Mrs. Marta Martinez-Fife
 Mr. Phillip Mayer
 Julie & Steve McCarty
 Emily & Nathan McClain
 Casey McFarland '00
 Michael McGee '68
 Mary (Garlinger) '64 &
 Mike McMahon
 Ms. Maria Medina
 Lisa & Jim Micheletti
 Mia & Greg Mirassou '84
 Maureen & Jason Moncure
 Mr. & Mr. Bruce Nicholson
 Kelly & Phillip Nicholson
 Bonnie Nielsen
 M.H. Nino
 Ms. Joanne Nissen
 Mr. & Mrs. John Nixon
 Ashlee & Nick Noroian '02
 NPM INC.
 Patti (Vierra) '58 &
 John Nunes
 The O'Laughlin Family
 Catherine & Jesus Olivas
 Ms. Doris A. Orantes
 Richard Otto '70
 Tom Pagano '69
 Ms. Jennifer Pagliaro
 Carrie & Jimmy Panetta
 Marris &
 Richard Petersen '90
 Danielle & John Pezzini '78
 PG & E Corporation
 Foundation
 Megan & Victor Plata
 Sara & Ryan Pollacci '02
 Angela Posada

Carol & William Pshide '58
 Tia & Jeffrey Pulford '65
 Barbara (Borchert) Pybas '61
 The Quinlan Family
 Lucy & Robert Quinones
 Amy & Jeff Rianda '83
 Jean Richardson '62
 Regina & Tom Riordan
 Myrna & Bernie Rivera
 Ruth Rodriguez
 Rosa Rossi
 Susie & Tony Rossi '66
 Connie Rossi-Rains
 Marilyn Rover
 Mr. & Mrs. Ruben Rueda
 Krista & Tom Sabaska
 Edna & Thomas Sanchez
 Carolyn (Moranda) '63 &
 John Sanders
 Mr. & Mrs. Douglas Saucedo
 Margaret & Jim Scattini '81
 Ms. Lynda Schraegle
 Lanette &
 Matthew Sekreta '76
 Kathie & Michael Sheehy '71
 Lynne Short
 Irina & Tim Short '83
 Mr. Joey Silva
 The Simms Family
 Katie & Tim Sitar '85
 Debbie Soares
 Mr. & Mrs. William Stahl
 Adam Stebbins
 Maryann & Steve Steinbach
 Chelsea & Nick Sterrett '04

Carol & Jim Storm '60
 Lily & Jerry Suarez
 Marian & David Sullivan
 Kelly & Bryan Sutherland
 Kate & Matthew Thorup '06
 Mrs. Rachel Trayford
 Danielle Acton &
 Marc Tunzi '76
 Kathy & Stephen Uccello
 Mary & Roger Val
 Selina & Alexiz Velasquez
 Marie & John Viarengo
 Laura & Rob Viarengo '86
 Emily & Jonathan Vorrath
 Sylvia Plaskett Ward
 Wells Fargo Foundation
 Educational Matching Gift
 Program
 Ruth (Richardson) Wilson '60
 Mr. & Mrs. Jeffrey Wright
 Suzan & James Wurz
 Stephanie & Terence Yasuda
 Neida & Steve Zalazowski
 Martin Zernicke '13
 Ms. Yolanda Zernicke

Donors by Category Current & Former Faculty & Staff

*Indicative of their commitment
 to both the students & the
 school, 100% of the current
 faculty & staff have supported
 the Palma Fund for 12
 CONSECUTIVE YEARS!*

Sylvia Ramirez &
 Carlos Alvarado

Willie Beesley '86
 Eve & Mike Bergez
 Holly & Rob Bishop
 Susie & Stan Brusa
 Joan & Robert Burlison '74
 Jane Burton
 Jan & Doug Cambier
 Stacy & Jeff Carnazzo '85
 Andrea & Arturo Castro
 Carolina & Luis Castro
 Teresa & Jon Christensen
 Erica & Scott Corner
 Stacie & David Cunha
 Yanne & Chris Dalman '88
 Sarah & John DeSantis
 Fred Doherty
 Br. Patrick D. Dunne, C.F.C.*
 Michelle & A.J. Galindo
 Margaret & George Garibay
 Kacey & Phil Giammanco '87
 John Gnosca '14
 Benito Gomez
 Patti & Art Henry
 Shelly & John Houseman
 Shannon & Thomas Hugo
 Cassie & Isaiah Jimenez '08
 Tracy & Jeffrey Jones
 Stephanie & Wyatt Maker
 Jessica & Tim Martinez '89
 Marta Martinez-Fife
 Emily & Nathan McClain
 Ms. Maria Medina
 Lisa & Jim Micheletti
 Mia & Greg Mirassou '84
 Maureen & Jason Moncure



Palma class of 2025 replaces traditional handshakes with fist bumps.

Ashlee & Nick Noroian '02
Jennifer Pagliaro
Megan & Victor Plata
Marisol Contreras-Rico & Raúl Rico '03
Cindy & Roger Rybkowski
Jackie & Doug Saucedo
Irina & Tim Short '83
Joey Silva
Adam Stebbins
Chelsea & Nick Sterrett '04
Marian & David Sullivan
Kate & Matthew Thorup '06
Kathy & Stephen Uccello
Mary & Roger Val
Laura & Rob Viarengo '86
Emily & Jonathan Vorrath
Neida & Steve Zalazowski

Current Parents

We recognize that parents already incur the cost of tuition and we are most grateful for their additional support, contribution & investment in their son's education.

Class of 2021

Bernadette & Rodolfo Amador
Mendy & John Amaral, Jr. '87
Anonymous
Leticia & Gabriel Avila
Peggy & Hilary Baumstarck
Michelle & Greg Beach
Troy Boutonnet
Pamela & Corey Butler
Susan Conley-Boutonnet
Lola Steinbaum-Cornell & Trent Cornell
Sheri & John Davidson '88
Dee & Michael Delapena
Maria & Pete Garibay
Kristin & Peter Iverson
Jodie & Glenn Kaminskis
Leslie & Fred Lombardi
Ruth Rodriguez
Margaret & Jim Scattini '81

Class of 2022

Leticia & Gabriel Avila
Renee & John Barnes
Annette & Anthony Bucholtz
Gina & Chris Cochetti
Maria & Allen Finley
Maria Gemma & Charles Hayden

Niaomi & Jeff Hrepich
Mary Catherine & Michael Malley
Julie & Steve McCarty
Pat & Wylie Mitchell
Karen & Chris Newcomb
Kelly & Phillip Nicholson
Danielle & Robert Nino
Nita & Tom Nino
Stephanie & Matt Ottone
Stephanie & Terence Yasuda

Class of 2023

Pamela & Corey Butler
Jenny Pan & Bingkun Chen
Beth & Nicholas Cina
Gina & Grant Cremers
Dee & Michael Delapena
Kathy & Aaron Fuqua '94
Kristy & Roy Guerin '94
Kelly & Roland Halcon
Kristin & Peter Iverson
Alison & Kris Marshall
Margaret D'Arrigo-Martin & Stephen Martin
Angela & Gerry Nielsen '79
Kate & Adam Secondo '94
Erin & Jack Watson

Class of 2024

Jenny & Rene Arbizu '97
Dallis & Sonny Bennett
Beth & Nicholas Cina
Gina & Chris Cochetti
Lisa Nino-Guerra & Jeff Guerra '92

Carly & Robert Hallatt
Yvonne & Chad Jury
Julie & Steve McCarty
Suzan & Sam Slater
Annie & Gene Zanger '80

Class of 2025

Mendy & John Amaral, Jr. '87
Sandra & Clayton Hamilton
The Macias Family
Nita & Tom Nino
Kate & Greg Perkins
Danielle & John Pezzini '78
Tanya & Erich Reinhardt
Ingrid & Jerrett Stoffel '94
Selina & Alexiz Velasquez

Class of 2026

Aileen & Jose Ajoc Jr.
Kate & Adam Secondo '94
Ginny & Justin Swan
Emma & Steven Vetter
Laura & Rob Viarengo '86

Alumni Parents

Alumni parents continue to demonstrate their long-term commitment & ongoing connection to Palma School.

Leonard Anable
Mrs. Brenda Rose Angelo
Anonymous (4)
Karen Antle
Jayleen & Lloyd Appling
Mrs. Nancy Ausonio
Mr. & Mrs. Reginald Barnes, Sr.

Rohena & M. Aslam Barra
Michelle & Greg Beach
Mr. Michael Bellinger
Eve & Mike Bergez
Shirley & Ernie Best '66
Lucia & Michael Boggiatto
Martha (Bernasconi) '63 & Mark Botelho '63
Valerie & Stan Braga
Zuzzanne & Steve Broom
Sandra Bruno & Sons
Susie & Stan Brusa
The Bucholtz Family
Joan & Robert Burlison '74
Elisa & Rolando Cabrera '83
Jan & Doug Cambier
Sylvia & Fred Capuyan
Stacy & Jeff Carnazzo '85
Ms. Karen Carrillo
Carolina & Luis Castro
Jessica & Don Clary
Laurie & Doug Classen '77
Lynn & Martin Colijn '72
Kay Collins
Erica & Scott Corner
Lenore & Dennis Cosgrove, Sr.
Norm Costa Family
Mr. Bill Dalman
Yanne & Chris Dalman '88
Irene Dameron
Shelley & Sam Daoro '80
Kathleen & John Davis
Sarah & John DeSantis
Marral & Davy Dizon
Paula & Dennis Donohue '72

Elaine Dotseth
Maureen & Brent Eastman '81
Kay Filice
Gerda & Raymond Foxworth
Rose & Gary Francioni
Mr. & Mrs. Ron Fuqua
Mr. Gregory Gamble & Mrs. Shannon Dunne-Gamble
Sandra & Josef Gamper
Margaret & George Garibay
Maria & Pete Garibay
Dr. & Mrs. Joseph Garvin
Jane & Gary Gasperson
Jeannette & Edward Geiger
Patricia & Thomas German
Pete Gnosca '75
Elizabeth & Harlan Groggin
Paula & Jim Guidotti
Doris & Wayne Gualarte
Leigh Haller
Gloria Castaneda-Henry & Thomas Henry
Beverly (Stolich) Holthouse '59
Leslie & Gary Holzhausen
Melanie & Tim Horwath
Rae Anne & Chris Huntington '82
Roberta (Fano) '59 & Louis Huntington
Patricia & Stephen Jensen
Carol Filice & Dennis Johnson '73
Gayla & Steve Jurevich '80
Jodie & Glenn Kaminskis
Kris & Gary Kaprielian
Dr. William Kennedy
Patrice & Todd Kinion
Christine & Art Kong
Mary & Robert Kutz '72
Judy & Vic Lanini
Mindy & Mark Leliaert
The Macias Family
Stephanie & Wyatt Maker
Margaret & John Marcroft
Mr. Phillip Mayer
Mary Ann & John McCarthy
Julie & Steve McCarty
Mia & Greg Mirassou '84
Mr. & Mrs. John V. Molinari
Dianne (de Lorimier) '59 & Thomas Mouisset
Kim & Lit Ng, Jr. '75
Kelly & Phillip Nicholson
Bonnie Nielsen



Junior high students engage in team building activities as a part of orientation.

Nita & Tom Nino
 Margot & Tom Nunes '69
 Maria & Robert O'Farrell
 The O'Laughlin Family
 Catherine & Jesus Olivas
 Jerelee & Nathan Olivas
 Stephanie & Matt Ottone
 Elizabeth & Chris Panetta
 Jean & Matt Panziera '74
 Danielle & John Pezzini '78
 Vickie & Andy Pomo '63
 Carol & William Pshide '58
 The Quinlan Family
 Lucy & Robert Quinones
 Tanya & Erich Reinhardt
 Amy & Jeff Rianda '83
 Lillian Rianda & Family
 Barbara &
 Clem Richardson, Jr. '67
 Regina & Tom Riordan
 Judy & Tom Romans
 Rosa Rossi
 Susie & Tony Rossi '66
 Connie Rossi-Rains
 Marilyn Rover
 Krista & Tom Sabaska
 Joan (Botelho) '61 &
 Jim Scattini '60
 Margaret & Jim Scattini '81
 Lynda Schraegle
 Lynne Short
 Mrs. Stella Short
 Irina & Tim Short '83
 The Simms Family
 Suzan & Sam Slater
 Claudia Smith
 Rosemarie & James Smith
 Jennifer Murphy-Smith &
 Jason Smith '87
 Debbie Soares
 Michele & Phil Speciale
 Mr. & Mrs. William Stahl
 Maryann & Steve Steinbach
 Lily & Jerry Suarez
 Marian & David Sullivan
 Kelly & Bryan Sutherland
 Pam & Mark Thornton
 Danielle Acton &
 Marc Tunzi '76
 Mary & Roger Val
 Marie & John Viarengo
 Suzan & James Wurz
 Stephanie & Terence Yasuda
 Brenda & Michael Zanger '82
 Ms. Yolanda Zernicke



Parents' Club hosts Palma's Closet where donated used textbooks and Palma wear are discounted for new families.

Grandparents (past & current)

Grandparents believe in the purpose of Palma School, the strong foundation & well-rounded education it provides for their grandsons.

Jayleen & Lloyd Appling
 Mrs. Nancy Ausonio
 Mr. & Mrs. Laurence Cain
 Barbara & Don Chapin
 The Conners Family
 The Norm Costa Family
 Mr. Bill Dalman
 Mr. & Mrs. Ron Fuqua
 Paula & Jim Guidotti
 Kate & Tim Hearne
 Jean Hontalas
 Roberta (Fanoe) '59 &
 Louis Huntington
 Judy & Vic Lanini
 Mr. & Mrs. Edward Lomboy
 Margaret & John Marcroft
 Mr. & Mrs. Robert Martin
 Nancy & George McInnis
 Mr. & Mr. Bruce Nicholson
 Bonnie Nielsen
 Ms. Doris A. Orantes
 Lillian Rianda & Family
 Myrna & Bernie Rivera
 Mrs. Val Roberti
 Joy & Elio Rodoni
 Rosa Rossi
 Joan (Botelho) '61 &
 Jim Scattini '60
 Calvin M. Short Family

Claudia Smith
 Joanne Taylor
 Marie & John Viarengo
 Sylvia Plaskett Ward
 Dr. & Mrs. P.T. Wooler

Alumni

All Palma students have benefited from the generosity of many who came before them. The ongoing support of Palma alumni is critical to the school's continued success.

1950's

Patt & Michel Aiello '59
 Margaret &
 Dennis Andersen '57
 Charles Borg '58
 Linda (Costa) Brown '56
 Matilde & Dick DeLuna '56
 Beverly (Stolich)
 Holthouse '59
 Roberta (Fanoe) '59 &
 Louis Huntington
 Dianne (de Lorimier) '59 &
 Thomas Mouisset
 Patti (Vierra) '58 &
 John Nunes
 Angela Posada '55
 Carol & William Pshide '58
 Judy & William Salmina '58

1960's

Janet (McKinsey) Agnew '64
 Michael Bauernfeind '65
 Shirley & Ernie Best '66

Judy & John Borchert '62
 Martha (Bernasconi) '63 &
 Mark Botelho '63
 Vicki (Hallstone) '62 &
 Phillip Broughton
 Anne & Jim Diggins '69
 Patsy (Shellooe) '61 &
 Neil Fanoe, Jr. '60
 Leslie & Tom Fanoe '64
 Susan & Robert Finocchio '69
 Rose-Marie Browning &
 Michael Fletcher '69
 Bea (Ortega) Gifford '60
 Linda (Losada) Gregory '63
 Nancy (Wilson) '62 &
 Rick Jones
 Brenda & Bruce Lauritson '67
 Arita & Richard Magno '61
 John Mahoney '63
 Michael McGee '68
 Mary (Garlinger) '64 &
 Mike McMahon
 Henry Nunes '61
 Margot & Tom Nunes '69
 Tom Pagano '69
 Vickie & Andy Pomo '63
 Tia & Jeffrey Pulford '65
 Barbara (Borchert) Pybas '61
 Barbara &
 Clem Richardson, Jr. '67
 Jean Richardson '62
 Susie & Tony Rossi '66
 Carolyn (Moranda) '63 &
 John Sanders
 Joan (Botelho) '61 &
 Jim Scattini '60

Matt Stevens '65
 Edward Storm '61
 Carol & Jim Storm '60
 Ruth (Richardson)
 Wilson '60
 David Zwingman '64

1970's

Max Agpaoa '72
 Jody & Joseph Annotti '75
 William Archuleta '77
 Joan & Robert Burlison '74
 Mark Caston '79
 Carla & Dave Ciolino '76
 Laurie & Doug Classen '77
 Lynn & Martin Colijn '72
 Ken Deen '75
 Paula &
 Dennis Donohue '72
 Pete Gnosca '75

Rick Gutierrez '71
 Lisa & Tim Haag '72
 Carol Filice &
 Dennis Johnson '73
 Mary & Robert Kutz '72
 Lynne &
 Michael Lauritson '73
 Emma & Victor Marquez '71
 Marylu & David Mesa '73
 Kim & Lit Ng, Jr. '75
 Angela & Gerry Nielsen '79
 Richard Otto '70
 Jean & Matt Panziera '74
 Danielle & John Pezzini '78
 Leanne &
 Jonathan Ryan '73
 Lanette &
 Matthew Sekreta '76
 Kathie &
 Michael Sheehy '71
 Danielle Acton &
 Marc Tunzi '76

1980's

Joseph M. Aliotti '80
 Mendy &
 John Amaral, Jr. '87
 Michael Annotti '88
 Maggie &
 Gabriel Aparicio '86
 Willie Beesley '86
 Kelli & Jim Brown '84
 Elisa & Rolando Cabrera '83
 Denise & Kevin Cardona '84
 Stacy & Jeff Carnazzo '85
 Steve Chesterman '89
 Kelly & Hamil Cupero '81

Yanne & Chris Dalman '88
 Shelley & Sam Daoro '80
 Sheri & John Davidson '88
 Linda & Robert Dunlop '83
 Maureen & Brent Eastman '81
 Shelby & Robert Eklund '80
 Joseph Flores '85
 Kacey & Phil Giammanco '87
 Kristin & Mike House '81
 Rae Anne &
 Chris Huntington '82
 Gayla & Steve Jurevich '80
 Kelli & Abe Lincoln '88
 Jessica & Tim Martinez '89
 Mia & Greg Mirassou '84
 Lucia & Christopher
 Mychajluk '81
 Amy & Jeff Rianda '83

Margaret & Jim Scattini '81
 Irina & Tim Short '83
 Katie & Tim Sitar '85
 Jennifer Murphy-Smith &
 Jason Smith '87
 Laura & Rob Viarengo '86
 Steve Viarengo '87
 Annie & Gene Zanger '80
 Brenda & Michael Zanger '82

1990's

Anne & Casey Angle '91
 Jenny & Rene Arbizu '97
 Katrina & Peter Barone '98
 Rebecca & Michael
 Castagnetto '94
 Tony Filice '99
 Kathy & Aaron Fuqua '94

Justine &
 Matt Gildersleeve '90
 Kristy & Roy Guerini '94
 Lisa Nino-Guerra &
 Jeff Guerra '92
 Eileen & Paul Hall '99
 Scott Henningsen '97
 Daniel Jaramillo '93
 Jeffrey V. Jimenez '98
 Jeff Kowalski '98
 Marris & Richard Petersen '90
 Kate & Adam Secondo '94
 Erin & Josh Short '93
 Ingrid & Jerrett Stoffel '94

2000's

Ashley & Luis Amaral '02
 Charles Cochran '02

Andrew Davis '04
 Valerie & Kellen Griffin '03
 Hugo Jaime '01
 Cassie & Isaiah Jimenez '08
 Christopher King '01
 Amanda & Michael Kong '04
 Whitney & Ryan Kong '05
 Casey McFarland '00
 Sarah & Eric Mueller '01
 Kevin Mueller '06
 Ashlee & Nick Noroian '02
 Steven Otero '07
 Sara & Ryan Pollacci '02
 Carrie & Daniel Reader '02
 Marisol Contreras-Rico &
 Raúl Rico '03
 Michelle & Stefan Salameh '00

Chelsea & Nick Sterrett '04
 Bec & Drew Taylor '01
 Amy & Ted Taylor '04
 Kate & Matthew Thorup '06

2010's

Jack Brusa '16
 Jonathan P. Capuyan '18
 Drew Dalman '17
 John Gnosca '14
 Garrett Maker '18
 Wyatt Maker '16
 Rachel & T. Bruce Taylor '10
 Benjamin White '14
 Dominic Zanger '13
 Nate Zanger '12
 Martin Zernicke '13

Restricted Gifts

The following donors gave for purposes other than the Palma Fund. We are deeply grateful to these individuals who have generously supported special projects within our school departments.

ASB

Jennifer & David Abdoo
 Jenny & Rene Arbizu '97
 Michelle & Greg Beach
 Janice Caprara
 Lillian DaSilva
 Maribel Ferreira
 Maria & Allen Finley
 Lisa Nino-Guerra &
 Jeff Guerra '92

Leslie & Fred Lombardi
 Maylani & Jacob Mahler
 Alison & Kris Marshall
 Margaret D'Arrigo-Martin &
 Stephen Martin
 Mrs. Marta Martinez-Fife
 Monica & Arturo Perez
 Tammy & John Sanders
 Ms. Stacey Scherer
 Mr. Joey Silva

Taco's La Potranca de Jalisco
 Sophia & Dan Witting

Athletic Council

American Supply Company
 Ms. Corrine Delapena
 Stephanie & Wyatt Maker
 Mr. Anthony Palmer &
 Mrs. Amy Seydel
 Jean & Matt Panziera '74

Ms. Carol Powell
 Mr. Edmund Scurich
 Kim & Pat Smith
 Marian & David Sullivan
 Harry Sweigert
 Cindy & John Winslow

Blessed Edmund Rice Society

Mr. & Mrs. Jeffrey Blank
 Maria & Ken Groza
 Amy & Matt Haas
 Harry Bronson & Edith R.
 Knapp Foundation
 Carolyn & Gary Pybas
 Charitable Fund
 Rotary Club of Watsonville
 Mr. & Mrs. Clyde Stevenson

Campus Ministry

Ms. Elizabeth Boyle
 Christian Brothers Institute
 Ms. Maureen Desmond
 Lisa & Tim Haag '72
 Harry Bronson & Edith R.
 Knapp Foundation
 Mr. Scott Willingham

Mountain Bike Club

A & G Machine Shop, Inc.

Christopher M. Mulé, DDS,
 Inc.
 Marina Plumbing & Heating
 Mr. Anthony Palmer &
 Mrs. Amy Seydel
 Universal Tax & Business
 Service
 Cindy & John Winslow

Parents' Club

American Supply Company
 Br. Patrick D. Dunne, C.F.C.
 Mr. Mark Eitelberg
 Mr. & Mrs. Michael Lipe
 Mary Ann & John McCarthy
 Maiella & Jay Olszanowski
 Savemart Supermarkets
 Smart & Final Charitable
 Foundation
 Marian & David Sullivan
 Swenson & Silacci Flowers

Sober Graduation

A & J Produce Corp.
 A & R Fresh INC
 Aladin Properties
 Bernadette &
 Rodolfo Amador
 Mendy &
 John Amaral, Jr. '87
 Anthony Costa & Sons



A sweet way to kick off the school year — the annual Taste of Palma Parent & Staff Mixer.

Mr. & Mrs. Ted Ardell
 Ausonio Incorporated
 Backus Properties
 Barlocke Insurance Services
 Sharon & Victor Barnett
 Benchmark Steel, Inc.
 Bengard Ranch, Inc.
 Boutonnet Farms, Inc.
 Brent Eastman Insurance
 Services, Inc.
 Susie & Stan Brusa
 Carol & Lou Calcagno
 Joine & Chip Campion '68
 Mr. & Mrs. David Canepa
 Cannery Row Company
 Church Brothers, LLC
 Paula (Breschini) Clark '57
 Gina & Chris Cochetti
 Kim & Mike Costa
 Credit Consulting Services, Inc.
 Shelley & Sam Daoro '80
 D'Arrigo Bros. Co. of California
 Glenna & Donald Datta
 Dee & Michael Delapena
 Lisa & Henry Dill '75
 Tiffany & Reno DiTullio '88
 Don & Barbara Chapin
 Foundation
 Helen Dunston
 EBX Logistics Inc.
 Maribel Ferreira
 Maria & Allen Finley
 Kathleen & Dino Gastello
 George Amaral Ranches, Inc.
 Delia & Pedro Gomez
 Gonzales Irrigation Systems
 Inc.
 Ms. Marilyn Gorman
 Paula & Jim Guidotti
 Amy & Matt Haas
 Kelly & Roland Halcon
 Hanna-Brunetti
 Henry Hibino Farms, LLC
 Mrs. Maria Hespern
 Italian Catholic Federation
 Kristin & Peter Iverson
 JD Home Group-RE/MAX
 Property Experts
 Jodie & Glenn Kaminskis
 Lorri & Tom Koster
 L.A. Hearne Company
 Mr. William Lipe
 Leslie & Fred Lombardi
 Kori & John Lukasko
 Ms. Desiree Luu

M & R Tomato Distributors,
 Inc.
 Marich Confectionary
 Mr. & Mrs. Rocci Martignoni
 Mr. & Mrs. Shawn Martignoni
 Mr. & Mrs. Frederick Menezes
 Mr. & Mrs. Michael Micheletti
 Judy & David Molinari
 Muzzi Family Farms, Inc.
 Faviola Nieto &
 Jonathan Navarro
 Neil Bassetti Farms, LLC
 Nino Real Estate
 Notre Dame High School
 Foundation
 NPM INC.
 The Nunes Company Inc.
 Margot & Tom Nunes '69
 Nutrien Ag Solutions
 Ottone Leach & Ray LLP
 Palma School Parents' Club
 Ms. Hillis Phelps
 Barbara Plaskett
 Printworks.Solutions
 Mr. & Mrs. Stanley Pura
 R.C. Farms LLC
 Sally Backus Reinmann &
 Bob Reinmann
 Amy & Jeff Rianda '83
 Rick & Tonya Antle Fund of
 the Community Foundation
 for Monterey County
 Regina & Tom Riordan
 Mr. & Mrs. Clyde Roberson
 S & S Marketing & Sales Inc.
 Sabor Farms, LLC
 Stephanie &
 Gregory Scattini '86
 Lori Lazzerini &
 Gary Silacci '81
 Ms. Steffanie Smith
 Sotheby's International
 Realty-Monterey Peninsula
 SouthWest Harvesting, Inc.
 Steinbeck Country Produce
 Steinbruner Hill, INC
 Marian & David Sullivan
 Kelly & Bryan Sutherland
 Terri Bradway Life Coaching
 True Leaf Farms, LLC
 The UNI-KOOL Partners
 Valley Produce LLC
 Tricia & Calvin Van Ruler
 Charlott & Jesus Varela
 VPS Companies-Inn Foods,
 Inc.



Chieftain faithful enjoy football scrimmages, games, a farmer's market and more on Red & Gold Family Day.

Yolanda Perez &
 Richard Westing
 Wheeler's Flooring
 Wilbur-Ellis Company
 Alice (Richardson) '64 &
 Howard Wilson

All Other Donations

Mendy & John Amaral, Jr. '87
 Dr. Daniel Murphy
 Angela & Gerry Nielsen '79

Champions Challenge Capital Campaign

Janice Ledgerwood &
 Joe Amader '86
 Andrew & Phyllis D'Arrigo
 Charitable Foundation
 Anne & Casey Angle '91
 Mrs. Nancy B. Ausonio
 Blazer Wilkinson LP
 Martha (Bernasconi) '63 &
 Mark Botelho '63
 Shane Breschini '95
 Julia & Chuck Brewer '71
 Denise &
 Vincent Brigantino '82
 Shaun Camcam '11
 Joine & Chip Campion '68
 Rebecca &
 Michael Castagnetto '94
 Carla & Dave Ciolino '76
 Charles Cochran '02
 Robin & Jason Cook '90

Cook's Photography
 Vicki & Stan Cooper '86
 Tianna Davidow
 Sheri & John Davidson '88
 Andrew Davis '04
 Ed Dowd '63
 Andrea & Ryan Drobnick '97
 E.M.D., Inc.
 Maureen & Brent Eastman '81
 Leslie & Tom Fanoie '64
 Kathleen & Dino Gastello
 Pete Gnosca '75
 Alice & Mike Hitchcock
 Roberta (Fanoie) '59 &
 Louis Huntington
 John & Annette Romans
 Family Fund of the
 Community Foundation of
 Monterey County
 Chris Knapp '00
 Law Offices of Philip H. Kelly
 Leavitt Central Coast
 Insurance Services
 Amy & Mark Lema '87
 Garrett Maker '18
 Wyatt Maker '16
 Stephanie & Wyatt Maker
 Mr. Patrick Martin
 Susie & David Martinez '87
 Michael McGee '68
 Mike McGrath '00
 Mission Ranches Fund of the
 Community Foundation for
 Monterey County

The Neff Family
 Nita & Tom Nino
 Margot & Tom Nunes '69
 Mr. Thomas Nunes, Sr.
 Vickie & Andy Pomo '63
 Mr. & Mrs. Jeffrey Pomo
 Tia & Jeffrey Pulford '65
 The Geoff Reimer '91 Family
 Ken Renney '65
 Danielle & Andrew Reyes '07
 Barbara &
 Clem Richardson, Jr. '67
 Susie & Tony Rossi '66
 Steve Roth '81
 Nick Ruiz '12
 Sally Hughes Church
 Foundation
 Margaret & Jim Scattini '81
 Cody Schmidt '06
 The Claudia & Richard
 Smith Family
 Edward Storm '61
 Tricia & Calvin Van Ruler
 Steve Viarengo '87
 MW Construction Services
 Brenda & Michael Zanger '82

Scholarships & Tuition Assistance

Endowed Scholarship Funds

**Julia Christensen
 Endowed Scholarship Fund**
 Julia Christensen Charitable
 Remainder Trust



Champions Challenge donors take a closer look at the new field

Brother Dunne Endowed Scholarship Fund

A & R Fresh INC
 Laura & Benigno Acevedo
 Amy & Matt Amaral '92
 American Supply Company
 Anonymous (4)
 Anonymous '02
 Anonymous '74
 Karen Antle
 Brian Antle '99
 Jeff Antle
 Ausonio Family Fund of the
 Community Foundation for
 Monterey County
 Ausonio Incorporated
 Mrs. Nancy B. Ausonio
 Katrina & Peter Barone '98
 Michelle & Greg Beach
 Willie Beesley '86
 Mr. Jaime Blas-Mendieta
 Lucia & Michael Boggiatto
 Amy & Ken Bonano
 Craig Borba '04
 Cindy & Ron Borba
 Charles Borg '58
 Rochelle & Les Breschini
 Amy & Peter Brown
 Pamela & Stephen Brown
 Julie & Thomas Bryan
 Mindy & Trey Busch
 Carol & Lou Calcagno
 Kirsten & Anthony Cannon
 Denise & Kevin Cardona '84

Pat (Nichter) Carlson '64
 Christy Cava ND '85 &
 Ken Hill
 Heidi & Jonathan Cava '89
 Katy & Matt Cava '88
 Central Coast Audiology, Inc.
 Desiree & Marcus Chung
 Carla & Dave Ciolino '76
 Jessica & Don Clary
 Laurie & Doug Classen '77
 Alejandro Coatu '00
 Kay Collins
 Craig Combs
 Katherine & Louis Cosentino
 Kim & Mike Costa
 Norm Costa Family
 Yanne & Chris Dalman '88
 Mr. Andrew D'Arrigo
 Sheri & John Davidson '88
 Kathleen & John Davis
 Barbara & Bill Deasy
 Dee & Michael Delapena
 Matilde & Dick DeLuna '56
 Kathy & Richard Denier
 Paula & Dennis Donohue '72
 Elaine Dotseth
 Victoria & David Duke
 Maureen Dunne-McGraw
 Maureen (Coyle) England '64
 Janine & Mark Faylor
 Mr. Kenneth Fernando
 Tony Filice '99
 Kay Filice
 Maria & Allen Finley

Patricia & Alfred Friedrich
 Dr. & Mrs. Joseph Garvin
 Gold Star Buick GMC
 Janet Rodgers & Kurt Gollnick
 Mr. Olegario Gomez
 Linda & D L Grier
 Doris & Wayne Gularte
 Lisa & Tim Haag '72
 Amy & Matt Haas
 Jennifer & Richard Haro '87
 Kimberly Hell
 Rosamaria & Pablo Hernandez
 Mr. Robert Hernandez &
 Ms. Susan Matcham
 Irene & Melchor Herrera
 Alice & Mike Hitchcock
 Leslie & Gary Holzhausen
 Rae Anne &
 Chris Huntington '82
 Roberta (Fano) '59 &
 Louis Huntington
 Dianne Irwin
 Yvette Irwin
 Kristin & Peter Iverson
 Daniel Jaramillo '93
 Mr. John Jensen
 Mrs. Anne &
 Dr. Ramon Jimenez
 Carol Filice &
 Dennis Johnson '73
 Ruth Johnson
 Tracy & Jeffrey Jones
 Kris & Gary Kaprielian
 Mrs. Lynn Kennedy
 Mrs. Maureen Kiers

Rosemary Kingston
 Mr. Frank Konecny
 Christine & Art Kong
 Amanda & Michael Kong '04
 Whitney & Ryan Kong '05
 Lorri & Tom Koster
 Andrea & Jason Lathos '86
 Sam Lavorato '55
 Tina & Sam Lavorato '83
 Betsy Leach
 Mindy & Mark Leliaert
 Amy & Mark Lema '87
 Shannon & Nick Lisica '01
 Leslie & Fred Lombardi
 Minerva & Bert Lundy
 Mr. John Machado
 Ms. Rose Marie Maddix
 Nancy & Dave Majewski
 Margaret & John Marcroft
 Nick Marquez '13
 Cheryl & Tom Marquez
 Tommy Marquez '04
 Emma & Victor Marquez '71
 Mario Martinez '00
 McGrath Massie Family
 Constance & Joseph Mazzei
 Mary Ann & John McCarthy
 Casey McFarland '00
 Mr. & Mrs. James McGetrick
 Mr. & Mrs. Robert McLaughlin
 Mary Alicia & Doug McRae
 Vivian Soffa & Mike Meuter
 Mrs. Pauline Mifsud
 Mr. & Mrs. Douglas Miller
 Jan & LeRoy Miller
 Sheila Molinari
 Mike Monroe '66
 Monterey County Regional
 Fire District
 Kathryn & Michael Moser
 Dianne (de Lorimier) '59 &
 Thomas Mouisset
 Michael Mueller Family
 Mr. & Mrs. Vito Mulé
 NorCal Recognition Products
 Margot & Tom Nunes '69
 Ocean Mist Farms
 Ms. Doris A. Orantes
 Mrs. Zenaida Orpilla
 Margaret & Roger Ostarello '66
 Stephanie & Matt Ottone
 Jeannine M. Pacioni
 Palma AP Environmental
 Science
 Palma Nature & Ecology Club

Mr. & Mrs. Arpesh Patel
 Mr. & Mrs. Rishay Patel
 Betsey & Steve Pearson
 Mrs. Dolores Pia
 Rosann Pisoni
 Vickie & Andy Pomo '63
 Printworks.Solutions
 Tia & Jeffrey Pulford '65
 Barbara &
 Clem Richardson, Jr. '67
 Mrs. Val Roberti
 Jody Wilkinson &
 Ric Romero
 Susie & Tony Rossi '66
 Mary & Shawn Russell
 Cindy & Roger Rybkowski
 Hannah &
 Garrett Sabaska '09
 Sacred Heart School
 Mr. & Mrs. Anthony Salameh
 Cody Schmidt '06
 Linda & Bennie Schulman
 Mrs. Joyce Secondo
 Mr. & Mrs. Mark Sergeant
 Catherine & Bruce Shaw
 Dr. William Shaw
 Mrs. Arlala Sheppard
 Calvin M. Short Family
 Mr. Kenneth Silacci
 Suzan & Sam Slater
 Rosemarie & James Smith
 Debbie Soares
 Renate & Richard Soares
 Mr. & Mrs. Frederick Spahr
 Marian & David Sullivan
 Kelly & Bryan Sutherland
 Joanne Taylor
 BJ & Ron Tempalski
 Stephanie & Donn Trenner
 Mr. & Mrs. Robert Tybor
 Gia Ussery
 Mary & Roger Val
 Tricia & Calvin Van Ruler
 Marie & John Viarengo
 Debbie & Michael Vollstedt
 Emily & Jonathan Vorrath
 The Vultaggio Family
 Catherine Horan-Walker &
 Leonard Walker
 Cindy & John Winslow
 Mrs. Nicoline Yoder
 Lisa York
 Timothy York
 Annie & Gene Zanger '80
 Mrs. Pauline Zanger

Scholarship Funds

Conrad Family Scholarship

Sally & Jim Conrad

Father Victor Farrell Memorial Scholarship

Mr. & Mrs. Brian Shanley

Guerrero Family Scholarship

EBX Logistics Inc.

Chris Hitchcock '77 Memorial Scholarship

Nalanda &
Philip Bowman '77
Joanne & Kevin Castello
Community Foundation for
Monterey County
Pete Hitchcock '86
Ms. Joanne Nissen
Laurie &
Tom Tankersley '77
Barbara Vantress

Hitchcock Family Scholarship

Alice & Mike Hitchcock

Koster Family Scholarship

Lorri & Tom Koster

Lema Family Scholarship

Amy & Mark Lema '87

Love & Honor Scholarship

Busch Family Foundation
Patty & Frank Busch
Mindy & Trey Busch

Margaret Morisoli Memorial Scholarship

Debi & Jim Morisoli '71

Todd Rubio Memorial Scholarship

Ms. Kathy Brand
Mr. & Mrs. Keith Keller
Ms. Lani Rogers
Mr. & Mrs. Paul Werthmann

Tuition Assistance

Greg Andersen
Anonymous (2)
Mrs. Nancy B. Ausonio
Sharon & Victor Barnett

Bengard Ranch, Inc.
Patty & Frank Busch
C.R.O.P. Foundation
Jan & Doug Cambier
Pat (Nichter) Carlson '64
Mrs. Kathy R. Carr
Mr. James T. Conn
Connie & Bob Lurie
Foundation
Diana Lynne Miller-Cornell &
Gregory Cornell '67
Norm Costa Family
Kim & Jeff Crook
Nadine & Jim Dermody
Yolanda & Joe Diaz
Diocese of Monterey
Mr. & Mrs. Donald Eddings
Patsy (Shellooe) '61 &
Neil Fanoie, Jr. '60
Malinda & Ed Filice
Maria & Allen Finley
John Firth '69
Sandra & Josef Gamper
Margaret & George Garibay
Jane & Gary Gasperson
Pete Gnosca '75
Eros Gonzalez '15
Ms. Ella Guidotti
Doris & Wayne Gualarte
Rick Gutierrez '71
Scott Henningsen '97
Leslie & Gary Holzhausen
Antonia & Michael Ihnot
Dianne Irwin
Dr. William Kennedy
Mr. & Mrs. David Kidd
Claudia & Gavin Kistingner '88
Knights of Columbus,
Salinas Council No. 1948
Mary & Robert Kutz '72
Amy & Mark Lema '87
Cathy & Con Linehan
Ross Majewski '07
Ms. Terri Marlett
Joseph Massolo '65
Julie & Steve McCarty
Barbara & Craig McFarland
Diane & Mike Middaugh '65
Judy & David Molinari
Maria & Robert O'Farrell
Catherine & Jesus Olivas
Jerelee & Nathan Olivas
Roger O'Sullivan
Barbara & Bruce Palmer
Rosann Pisoni

Debbie & Dan Porter
Lillian Rianda & Family
Ted Richardson Jr.
Annette & John Romans
Virginia Chambers-Ryan &
Anthony Ryan
Margaret & Jim Scattini '81
Pauahi & Patrick Sheehy '58
Elizabeth Fox-Short &
John Short
Liam Short '18
Noah Short '10
Quinn Short '05
Seth Short '07
The Simms Family
Dr. Laura Solorio
Camille Stevens & Family
Marian & David Sullivan
Kelly & Bryan Sutherland
Thomasmeyer Family Fund at
Placer Community
Foundation
Yolanda & Michael Trujillo
Craig Ulrici '57
Sal Ursino
Mary & Roger Val
Tricia & Calvin Van Ruler
Mr. & Mrs. Martin Vonnegut
Emily & Jonathan Vorrath
Lisa Wartinger
Mr. Edward Whittenberg
Ms. Edwina Worden
Lisa York
Mr. Timothy York
Mrs. Pauline Zanger

Gifts In Kind

Each year, Palma School receives tangible gifts of personal property, equipment & special services which add immeasurably to our school events.

American Supply Company
Anthony Lombardo &
Associates
Bianchi, Kasavan & Pope, LLP
Ms. Corrine Delapena
Mr. Mark Eitelberg
Harry Bronson & Edith R.
Knapp Foundation
Ms. Emily Lauritsen
Ms. Rebecca Lauritsen
Mr. & Mrs. Michael Lipe
Marich Confectionary
Dr. Daniel Murphy
Ottone Leach & Ray LLP
Savemart Supermarkets
Robin Seelye
Mr. Earl Sutton
Swenson & Silacci Flowers
Taco's La Potranca de Jalisco
Theresa & Dave Todd
Cindy & John Winslow

Matching Gifts from Corporations & Individuals

It is possible for donors to double their giving by participating in their company's matching gifts program.

Bank of America Charitable
Foundation
Costco

Ed Dowd '63
HP Inc
Juniper Networks
Foundation Fund
PG & E Corporation
Foundation
Wells Fargo Foundation
Educational Matching
Gift Program

Alumni Giving to Palma School & Palma School Foundation

Alumni acknowledge through their generosity the role Palma played in their lives and the role it will play for current students and new alums.

1950's

Patt & Michel Aiello '59
Margaret &
Dennis Andersen '57
Charles Borg '58
Linda (Costa) Brown '56
Paula (Breschini) Clark '57
Matilde & Dick DeLuna '56
Beverly (Stolich)
Holthouse '59
Roberta (Fanoie) '59 &
Louis Huntington
Sam Lavorato '55
Dianne (de Lorimier) '59 &
Thomas Mouisset
Patti (Vierra) '58 &
John Nunes
Angela Posada
Carol & William Pshide '58
Judy & William Salmina '58



Palma President Chris Dalman '88 brings donors to meet Coach Jeff Carnazzo '85 and the varsity football team.

Pauahi & Patrick Sheehy '58
Craig Ulrici '57

1960's

Janet (McKinsey) Agnew '64
Michael Bauernfeind '65
Shirley & Ernie Best '66
Judy & John Borchert '62
Martha (Bernasconi) '63 &
Mark Botelho '63
Vicki (Hallstone) '62 &
Phillip Broughton
Joine & Chip Campion '68
Pat (Nichter) Carlson '64
Diana Lynne Miller-Cornell &
Gregory Cornell '67
Anne & Jim Diggins '69
Ed Dowd '63
Maureen (Coyle) England '64
Patsy (Shellooe) '61 &
Neil Fanoie, Jr. '60
Leslie & Tom Fanoie '64
Susan & Robert Finocchio '69
John Firth '69
Rose-Marie Browning &
Michael Fletcher '69
Bea (Ortega) Gifford '60
Linda (Losada) Gregory '63
Nancy (Wilson) '62 &
Rick Jones
Brenda & Bruce Lauritson '67
Arita & Richard Magno '61
John Mahoney '63
Joseph Massolo '65
Michael McGee '68
Mary (Garlinger) '64 &
Mike McMahon
Diane & Mike Middaugh '65
Mike Monroe '66
Henry Nunes '61
Margot & Tom Nunes '69
Margaret & Roger Ostarello '66
Tom Pagano '69
Vickie & Andy Pomo '63
Tia & Jeffrey Pulford '65
Barbara (Borchert) Pybas '61
Ken Renney '65
Barbara &
Clem Richardson, Jr. '67
Jean Richardson '62
Susie & Tony Rossi '66

Carolyn (Moranda) '63 &
John Sanders
Joan (Botelho) '61 &
Jim Scattini '60
Matt Stevens '65
Edward Storm '61
Carol & Jim Storm '60
Alice (Richardson) '64 &
Howard Wilson
Ruth (Richardson) Wilson '60
David Zwingman '64

1970's

Max Agpaoa '72
Jody & Joseph Annotti '75
Anonymous '74
William Archuletta '77
Nalanda & Philip Bowman '77
Julia & Chuck Brewer '71
Joan & Robert Burlison '74
Mark Caston '79
Carla & Dave Ciolino '76
Laurie & Doug Classen '77
Lynn & Martin Colijn '72
Ken Deen '75
Lisa & Henry Dill '75
Paula & Dennis Donohue '72
Pete Gnosca '75
Rick Gutierrez '71
Lisa & Tim Haag '72
Carol Filice &
Dennis Johnson '73
Mary & Robert Kutz '72
Lynne &
Michael Lauritson '73
Emma & Victor Marquez '71
Marylu & David Mesa '73
Debi & Jim Morisoli '71
Kim & Lit Ng, Jr. '75
Angela & Gerry Nielsen '79
Richard Otto '70
Jean & Matt Panziera '74
Danielle & John Pezzini '78
Jennifer &
LeRoy Rodriguez '78
Leanne & Jonathan Ryan '73
Lanette &
Matthew Sekreta '76
Kathie & Michael Sheehy '71
Laurie & Tom Tankersley '77
Danielle Acton &
Marc Tunzi '76

1980's

Joseph M. Aliotti '80
Janice Ledgerwood &
Joe Amader '86
Mendy & John Amaral, Jr. '87
Michael Annotti '88
Maggie & Gabriel Aparicio '86
Willie Beesley '86
Denise &
Vincent Brigantino '82
Kelli & Jim Brown '84
Elisa & Rolando Cabrera '83
Denise & Kevin Cardona '84
Stacy & Jeff Carnazzo '85
Katy & Matt Cava '88
Steve Chesterman '89
Vicki & Stan Cooper '86
Kelly & Hamil Cupero '81
Yanne & Chris Dalman '88
Shelley & Sam Daoro '80
Sheri & John Davidson '88
Tiffany & Reno DiTullio '88
Linda & Robert Dunlop '83
Maureen & Brent Eastman '81
Shelby & Robert Eklund '80
Joseph Flores '85
Kacey & Phil Giammanco '87
Jennifer & Richard Haro '87
Pete Hitchcock '86
Kristin & Mike House '81
Rae Anne &
Chris Huntington '82
Gayla & Steve Jurevich '80
Claudia &
Gavin Kistinger '88
Andrea & Jason Lathos '86
Tina & Sam Lavorato '83
Amy & Mark Lema '87
Kelli & Abe Lincoln '88
Susie & David Martinez '87
Jessica & Tim Martinez '89
Mia & Greg Mirassou '84
Lucia & Christopher
Mychajluk '81
Amy & Jeff Rianda '83
Steve Roth '81
Stephanie &
Gregory Scattini '86
Margaret & Jim Scattini '81
Irina & Tim Short '83

Lori Lazzerini &
Gary Silacci '81
Katie & Tim Sitar '85
Jennifer Murphy-Smith &
Jason Smith '87
Laura & Rob Viarengo '86
Steve Viarengo '87
Annie & Gene Zanger '80
Brenda & Michael Zanger '82

1990's

Amy & Matt Amaral '92
Anne & Casey Angle '91
Anonymous '93
Jenny & Rene Arbizu '97
Katrina & Peter Barone '98
Shane Breschini '95
Rebecca &
Michael Castagnetto '94
Robin & Jason Cook '90
Andrea & Ryan Drobnick '97
Kenneth Fernando '96
Tony Filice '99
Kathy & Aaron Fuqua '94
Justine & Matt Gildersleeve '90
Kristy & Roy Guerini '94
Lisa Nino-Guerra &
Jeff Guerra '92
Eileen & Paul Hall '99
Scott Henningsen '97
Daniel Jaramillo '93
Jeffrey V. Jimenez '98
Jeff Kowalski '98
Alex & Brian Neff '96
Hetel & Arpesh Patel '97
Marris & Richard Petersen '90
Jenn & Jeff Pomo '97
The Geoff Reimer '91
Kate & Adam Secondo '94
Ingrid & Jerrett Stoffel '94
Christina & Mark Williams '92
Ashley & Luis Amaral '02
Craig Borba '04

2000's

Anonymous '02
Alejandro Coatu '00
Charles Cochran '02
Andrew Davis '04
Valerie & Kellen Griffin '03
Hugo Jaime '01

Cassie & Isaiah Jimenez '08
Christopher King '01
Chris Knapp '00
Amanda & Michael Kong '04
Whitney & Ryan Kong '05
Shannon & Nick Lisica '01
Ross Majewski '07
Tommy Marquez '04
Mario Martinez '00
Casey McFarland '00
Mike McGrath '00
Sarah & Eric Mueller '01
Kevin Mueller '06
Ashlee & Nick Noroian '02
Steven Otero '07
Sara & Ryan Pollacci '02
Danielle &
Andrew Reyes '07
Marisol Contreras-Rico &
Raúl Rico '03
Hannah &
Garett Sabaska '09
Michelle &
Stefan Salameh '00
Cody Schmidt '06
Quinn Short '05
Seth Short '07
Chelsea & Nick Sterrett '04
Bec & Drew Taylor '01
Amy & Ted Taylor '04
Kate & Matthew Thorup '06

2010's

Anonymous '14
Jaime Blas-Mendieta '17
Jack Brusa '16
Shaun Camcam '11
Jonathan P. Capuyan '18
Drew Dalman '17
John Gnosca '14
Eros Gonzalez '15
Garrett Maker '18
Wyatt Maker '16
Nick Marquez '13
Nick Ruiz '12
Liam Short '18
Noah Short '10
Rachel & T. Bruce Taylor '10
Dominic Zanger '13
Nate Zanger '12
Martin Zernicke '13

In Honor of Gifts in honor provide a lasting tribute. Palma thanks the following individuals for their kindness in honor of others. (As of June 30, 2021)

In Honor of John 'JT' Amaral '21
Tiffany & Reno DiTullio '88

In Honor of Mendy Amaral
Rick & Tonya Antle Fund of the
Community Foundation for
Monterey County

In Honor of Kimberly Rene Barnes
Claudia & Gavin Kistinger '88

In Honor of Katrina Carmichael Barone
Lynn & Robin Carmichael

In Honor of Class of 2012
Jessica & Don Clary

In Honor of Class of 2014
Doris & Wayne Gultarte

In Honor of Class of 2021
Mendy & John Amaral, Jr. '87

In Honor of Class of 2025
Mendy & John Amaral, Jr. '87

In Honor of Chris Dalman '88
Jack Brusa '16
Susie & Stan Brusa
Mr. James T. Conn
Roberta (Fano) '59 &
Louis Huntington

In Honor of Luke Garner '24
Mr. & Mrs. Edward Lomboy

In Honor of Joseph Kingston
Shelby & Robert Eklund '80

In Honor of Dino Lazzerini '21
Myrna & Bernie Rivera

In Honor of Misha Lomboy '22
Mr. & Mrs. Edward Lomboy

In Honor of Lyric & John McCarthy '00
Karen & Patrick Lopes

In Honor of Mary Ann McCarthy & John McCarthy
Karen & Patrick Lopes

In Honor of Casey McFarland '00
Barbara & Craig McFarland

In Honor of Petie Helfrich
Margaret & George Garibay

In Honor of Nick Ottone '16
Ms. Elizabeth Boyle

In Honor of Palma School Maintenance Staff
Maria & Allen Finley

In Honor of Elizabeth & Chris Panetta
Carrie & Jimmy Panetta

In Honor of Jim Scattini '81
Lisa & Tim Haag '72

In Honor of Kelly & Bryan Sutherland
Karen & Patrick Lopes

In Honor of Andrew Wooler '15
Dr. & Mrs. P.T. Wooler

In Honor of Jeff Wurz '03
Suzan & James Wurz

In Memory of Gifts in memory provide a lasting tribute. Palma thanks the following individuals for their kindness in memory of others. (As of June 30, 2021)

In Memory of Shahin Anable
Mr. Leonard Anable

In Memory of Mr. & Mrs. Joseph Annotti
Camille Stevens & Family

In Memory of Robert Barich '73
Lynne & Michael Lauritson '73

In Memory of Aislinn Bellinger
Mr. Michael Bellinger

In Memory of John W. Brown
Linda (Costa) Brown '56

In Memory of Dennis Caprara
Calvin M. Short Family

In Memory of Frances Cava
Claudia & Gavin Kistinger '88

In Memory of Frances & Bob Cava
Christy Cava ND '85 & Ken Hill
Heidi & Jonathan Cava '89
Katy & Matt Cava '88

In Memory of Linda Ciolino
Carla & Dave Ciolino '76

In Memory of Michael Classen '73
Jean & Matt Panziera '74

In Memory of Steve Clayton '76
Maryann & Steve Steinbach
Cindy & John Winslow

In Memory of George L. Comeau '62
Judy & John Borchert '62

In Memory of Victor "Mickey" Collins
Kay Collins

In Memory of Bernard Corpuz '95
Shane Breschini '95

In Memory of Norm Costa
Norm Costa Family
Stephanie & Wyatt Maker
Coach Angelo Ross, Jr.

In Memory of Janet Dalman
Calvin M. Short Family

In Memory of Joey Diaz '93
Erin & Josh Short '93

In Memory of Elsie Dill
Dr. William Kennedy

In Memory of Kathleen & Edward J. Dunne
Br. Patrick D. Dunne, C.F.C.*

In Memory of Br. Patrick D. Dunne, C.F.C.
A & R Fresh INC
Laura & Benigno Acevedo
Joseph M. Aliotti '80
Amy & Matt Amaral '92
Karen Antle
Brian Antle '99
Jeff Antle
Ausonio Family Fund of the
Community Foundation for
Monterey County
Ausonio Incorporated
Mrs. Nancy Ausonio
Leticia & Gabriel Avila

Sharon & Victor Barnett
Katrina & Peter Barone '98
Rohena & M. Aslam Barra
Michelle & Greg Beach
Jaime Blas-Mendieta '17
Lucia & Michael Boggiatto
Amy & Ken Bonano
Craig Borba '04
Cindy & Ron Borba
Charles Borg '58
Rochelle & Les Breschini
Amy & Peter Brown
Pamela & Stephen Brown
Julie & Thomas Bryan
Carol & Lou Calcagno
Jan & Doug Cambier
Kirsten & Anthony Cannon
Denise & Kevin Cardona '84
Pat (Nichter) Carlson '64
Central Coast Audiology, Inc.
Desiree & Marcus Chung
Carla & Dave Ciolino '76
Jessica & Don Clary
Laurie & Doug Classen '77
Alejandro Coatu '00
Kay Collins
Mr. Craig Combs
Katherine & Louis Cosentino
Kim & Mike Costa
Norm Costa Family
Kim & Jeff Crook
Yanne & Chris Dalman '88
Mr. Andrew D'Arrigo
Sheri & John Davidson '88
Kathleen & John Davis
Dee & Michael Delapena

Matilde & Dick DeLuna '56
Kathy & Richard Denier
Nadine & Jim Dermody
Yolanda & Joe Diaz
Paula & Dennis Donohue '72
Elaine Dotseth
Victoria & David Duke
Maureen Dunne-McGraw
Maureen (Coyle) England '64
Patsy (Shellooe) '61 &
Neil Fano, Jr. '60
Janine & Mark Faylor
Kenneth Fernando '96
Tony Filice '99
Malinda & Ed Filice
Kay Filice
Maria & Allen Finley
Gerda & Raymond Foxworth
Patricia & Alfred Friedrich
Sandra & Josef Gamper
Dr. & Mrs. Joseph Garvin
Jane & Gary Gasperson
Pete Gnosca '75
Gold Star Buick GMC
Janet Rodgers & Kurt Gollnick
Mr. Olegario Gomez
Eros Gonzalez '15
Linda & D L Grier
Elizabeth & Harlan Groggin
Ms. Ella Guidotti
Doris & Wayne Gultarte
Rick Gutierrez '71
Lisa & Tim Haag '72
Amy & Matt Haas
Kimberly Hell
Scott Henningsen '97

Rosamaria & Pablo Hernandez
Mr. Robert Hernandez &
Ms. Susan Matcham
Irene & Melchor Herrera
Alice & Mike Hitchcock
Leslie & Gary Holzhausen
Rae Anne & Chris Huntington '82
Roberta (Fano) '59 & Louis
Huntington
Antonia & Michael Ihnot
Dianne Irwin
Yvette Irwin
Daniel Jaramillo '93
Mr. John Jensen
Mrs. Anne & Dr. Ramon Jimenez
Carol Filice & Dennis Johnson '73
Ruth Johnson
Tracy & Jeffrey Jones
Kris & Gary Kaprielian
Mrs. Lynn Kennedy
Dr. William Kennedy
Mrs. Maureen Kiers
Rosemary Kingston
Patrice & Todd Kinion
Claudia & Gavin Kistinger '88
Mr. Frank Konecny
Christine & Art Kong
Amanda & Michael Kong '04
Whitney & Ryan Kong '05
Lorri & Tom Koster
Mary & Robert Kutz '72
Andrea & Jason Lathos '86
Sam Lavorato '55
Tina & Sam Lavorato '83
Betsy Leach
Mindy & Mark Leliaert
Cathy & Con Linehan
Shannon & Nick Lisica '01
Minerva & Bert Lundy
Mr. John Machado
Ms. Rose Marie Maddix
Nancy & Dave Majewski
Ross Majewski '07
Margaret & John Marcroft
Debbie & Michael Marcroft '74
Nick Marquez '13
Cheryl & Tom Marquez
Tommy Marquez '04
Emma & Victor Marquez '71
Mario Martinez '00
Mrs. Marta Martinez-Fife
McGrath Massie Family
Sister Barbara Matasci
Constance & Joseph Mazzei
Mary Ann & John McCarthy
Casey McFarland '00
Mr. & Mrs. James McGetrick
Mr. & Mrs. Robert McLaughlin
Mary Alicia & Doug McRae
Vivian Soffa & Mike Meuter
Diane & Mike Middaugh '65
Mrs. Pauline Mifsud
Mr. & Mrs. Douglas Miller
Jan & LeRoy Miller
Judy & David Molinari
Sheila Molinari
Monterey County Regional Fire
District

Mr. & Mrs. Anthony Moreno
Kathryn & Michael Moser
Dianne (de Lorimier) '59 &
Thomas Mouisset
Michael Mueller Family
Mr. & Mrs. Vito Mulé
Lucia & Christopher Mychajluk '81
Ms. Joanne Nissen
NorCal Recognition Products
NPM INC.
Margot & Tom Nunes '69
Ocean Mist Farms
Maria & Robert O'Farrell
Catherine & Jesus Olivas
Ms. Doris A. Orantes
Mrs. Zenaida Orpilla
Margaret & Roger Ostarello '66
Stephanie & Matt Ottone
Jeannine M. Pacioni
Barbara & Bruce Palmer
Elizabeth & Chris Panetta
Hetal & Arpesh Patel '97
Mr. & Mrs. Rishay Patel
Betsey & Steve Pearson
Mrs. Dolores Pia
Rosann Pisoni
Vickie & Andy Pomo '63
Debbie & Dan Porter
Printworks.Solutions
Tia & Jeffrey Pulford '65
The Quinlan Family
Carrie & Daniel Reader '02
Lillian Rianda & Family
Barbara & Clem Richardson, Jr. '67
Ted Richardson Jr.
Jean Richardson '62
Mrs. Val Roberti
Annette & John Romans
Jody Wilkinson & Ric Romero
Coach Angelo Ross, Jr.
Susie & Tony Rossi '66
Mary & Shawn Russell
Virginia Chambers-Ryan &
Anthony Ryan
Cindy & Roger Rybkowski
Hannah & Garrett Sabaska '09
Sacred Heart School
Mr. & Mrs. Anthony Salameh
Margaret & Jim Scattini '81
Cody Schmidt '06
Linda & Bennie Schulman
Mrs. Joyce Secondo
Mr. & Mrs. Mark Sergeant
Catherine & Bruce Shaw
Dr. William Shaw
Mrs. Arlala Sheppard
Calvin M. Short Family
Mr. & Mrs. Kenneth Silacci
Suzan & Sam Slater
Rosemarie & James Smith
Debbie Soares
Renate & Richard Soares
Dr. Laura Solorio
Mr. & Mrs. Frederick Spahr
Maryann & Steve Steinbach
Camille Stevens & Family
Marian & David Sullivan
Kelly & Bryan Sutherland

Taylor Farms
Joanne Taylor
BJ & Ron Tempalski
Stephanie & Donn Trenner
Yolanda & Michael Trujillo
Mr. & Mrs. Robert Tybor
Sal Ursino
Gia Ussery
Mary & Roger Val
Marie & John Viarengo
Debbie & Michael Vollstedt
Mr. & Mrs. Martin Vonnegut
Emily & Jonathan Vorrath
The Vultaggio Family
Lisa Wartinger
Erin & Jack Watson
Mr. & Mrs. Jeffrey Wright
Mrs. Nicoline Yoder
Lisa York
Mr. Timothy York
Annie & Gene Zanger '80
Mrs. Pauline Zanger

In Memory of Aldene & Henry Fano

Mr. & Mrs. Ron Fuqua

In Memory of Mike Fano '62

Leslie & Tom Fano '64

In Memory of Catherine & Raymond Firth

John Firth '69

In Memory of Veronica & Walter Fletcher

Rose-Marie Browning &
Michael Fletcher '69

In Memory of Joshua Forrest '92

Ms. Teresa Bunnell
Ms. Geraldine Dorney
Mr. & Mrs. Donald Eddings

In Memory of Ron Fuqua, Sr.

Mr. & Mrs. Ron Fuqua

In Memory of Del Garlinger

Mary (Garlinger) '64 &
Mike McMahon

In Memory of Carrie Gozzelino

Beverly (Stolich) Holthouse '59

In Memory of Irene & Norman Graulich

Paula & Jim Guidotti

In Memory of Br. John Hugh Greenan

Jennifer Murphy-Smith &
Jason Smith '87
The Richard & Claudia Smith
Family

In Memory of Robert Daniel Gutierrez

Rick Gutierrez '71

In Memory of Mary Hallstone

Vicki (Hallstone) '62 &
Phillip Broughton

In Memory of Carol Harwood

Calvin M. Short Family

In memory of Dr. Bob Helfrich

Margaret & George Garibay
Mrs. Rachel Trayford

In Memory of Christopher Hitchcock '77

Bea (Ortega) Gifford '60
Pete Hitchcock '86
Ms. Joanne Nissen

In memory of Katherine & Glen Holzhausen

Leslie & Gary Holzhausen

In Memory of Chris Huttenhoff '73

Lynne & Michael Lauritson '73

In Memory of John Kelso

Dr. & Mrs. Joseph Garvin

In Memory of William "Bill" King '58

Carol & William Pshide '58

In memory of Joseph Kingston

Jayleen & Lloyd Appling
Ausonio Incorporated
Michelle & Greg Beach
Kay Collins
Beverly (Stolich) Holthouse '59
Roger O'Sullivan
Barbara (Borchert) Pybas '61
Jennifer & LeRoy Rodriguez '78
Rosa Rossi
Susie & Tony Rossi '66
Connie Rossi-Rains
Margaret & Jim Scattini '81
Kelly & Bryan Sutherland
Mary & Roger Val

In Memory of Robbie Kutz

Mary & Robert Kutz '72

In Memory of Alda Lauritson

Ms. Emily Lauritson
Ms. Rebecca Lauritson

In Memory of Shirley Lavorato

Aldo DeRose & Family
Rose & Gary Francioni
Linda & D L Grier
Doris & Wayne Gularte
Mr. Peter Kasavan
Joan (Botelho) '61 &
Jim Scattini '60
Debbie Soares

In Memory of Casey Aaron Lee

John Gnosca '14

In Memory of JoAnn Leonardini '60

Ruth (Richardson) Wilson '60

In Memory of Ann Mahoney '60

Ruth (Richardson) Wilson '60

In Memory of Eugene Martinez

Joan & Robert Burlison '74

In Memory of Emilie McDonald
The Harry E McDonald Family
Trust

**In Memory of Stephanie
McFarland**
Calvin M. Short Family

**In Memory of Brother Charles
McManus**
Pauahi & Patrick Sheehy '58

In Memory of Blake Mitchell
Judy & Tom Romans

In Memory of Tyler Mitchell '96
Judy & Tom Romans

**In Memory of Victor &
Louise Molinari**
Mr. & Mrs. John V. Molinari

**In Memory of Lola &
Fred Monroe**
Mike Monroe '66

In Memory of John Oliverio '69
Valerie & Kellen Griffin '03
Roberta (Fano) '59 &
Louis Huntington
Tom Pagano '69

**In Memory of Rita &
Benny Orlando**
Mary & Will White

In Memory of Linda Pedrozzi '60
Ruth (Richardson) Wilson '60

In Memory of Bruce Petersen
Sandra Bruno & Sons

In Memory of Robert Pia
Mrs. Dolores Pia

In Memory of Ida & Frank Pomo
Vickie & Andy Pomo '63

In Memory of Richard Rhodes
Karen Antle
Brian Antle '99
Jeff Antle
Michelle & Greg Beach
Bengard Ranch, Inc.
Yanne & Chris Dalman '88
Shelley & Sam Daoro '80
Maureen & Brent Eastman '81
Entre Nous Society, Inc.
Jean Hontalas
Roberta (Fano) '59 &
Louis Huntington
Christine & Art Kong
Amanda & Michael Kong '04
Whitney & Ryan Kong '05
Lorri & Tom Koster
Betsy Leach
Mr. & Mrs. C.E. Little
Mary Ann & John McCarthy
Dianne (de Lorimier) '59 &
Thomas Mouisset
Ms. Joanne Nissen
Carolyn & Gary Pybas Charitable
Fund
Carolyn (Moranda) '63 &
John Sanders
Margaret & Jim Scattini '81
Mr. & Mrs. William Stahl
Joanne Taylor
Mary & Roger Val
Whitson Engineers

In Memory of Val Roberti
Laura Roberti

**In Memory of Leonie &
Howard Rose**
Mrs. Brenda Rose Angelo

In Memory of Marguerite N. Ross
Coach Angelo Ross, Jr.

**In Memory of Arnold (Mike)
Rover**
Marilyn Rover

In Memory of Angelo Rubio Jr.
Ms. Kathy Brand
Mr. & Mrs. Keith Keller
Ms. Lani Rogers

In Memory of Todd Rubio '87
Daniel Jaramillo '93

**In Memory of Thais Attinger
Salmina**
Judy & William Salmina '58

In Memory of Eleanor Sanders
Mary Ann & John McCarthy

**In Memory of Dr. E. Joseph &
Leonie Sekreta**
Lanette & Matthew Sekreta '76

In Memory of Calvin Short
Calvin M. Short Family

In Memory of Richard Smith
Jennifer Murphy-Smith &
Jason Smith '87
The Richard & Claudia Smith
Family

In Memory of Jeff Taylor
Tracy & Jeffrey Jones
Mary Ann & John McCarthy
Joanne Taylor

In Memory of Zenon Torres '88
Kelli & Abe Lincoln '88

In Memory of Brian Trenner '97
Stephanie & Donn Trenner

In Memory of Max Tybrowski '84
Joseph Flores '85

**In Memory of Rose &
Clarence Vosti**
Elaine Dotseth

**In Honor of The Walker/
Ryan Boys**
Catherine Horan-Walker &
Leonard Walker

**In Memory of Cecile "Sis"
Weisner**
Lynne & Michael Lauritson '73

In Memory of Eugene Zanger
Annie & Gene Zanger '80
Mrs. Pauline Zanger



Champions Challenge donors with the varsity football team on the new field.



Palma School
919 Iverson Street
Salinas, CA 93901

Non-Profit Org
US Postage
PAID
Salinas, CA
Permit No. 180

Return Service Requested

If this issue of the President's Report from Palma School is addressed to your son who no longer maintains a permanent address at your home, please help us update our records by calling the Advancement office (831) 422-2309 or email the correct address to alumni@palmaschool.org.

HONOR OUR 70th

*Celebrate the achievement of reaching 70 years
each month with a \$70 gift.*

\$8

MONTH

*launches a
sustaining source
of support*

\$19

MONTH

*enriches students'
educational
experience*

\$50

MONTH

*a significant
contribution to
our Chieftains*

\$70

MONTH

*to honor the
70th anniversary
of Palma School*

\$100

MONTH

*an incredible
investment in
our young men*



**Cross
& Shield**

palmaschool.org | 831.422.2309

